



#### Broche DIN 69893 HSK - E40

n = 50 - 30000 1/min  
P = 10 kW  
M = 4.2 Nm

La longueur maximum avec l'outil ne doit pas dépasser 95 mm à partir du nez de broche.

Die Maximallänge ab Spindelnase darf inklusive Werkzeug 95 mm nicht überschreiten.

The total length including the tool should not exceed 95 mm measured from the spindle nose.

#### Porte-pinces, pinces et écrous E Spannzangenhalter, Zangen und Muttern E Collet chucks, collets and nuts E

Fig. 1

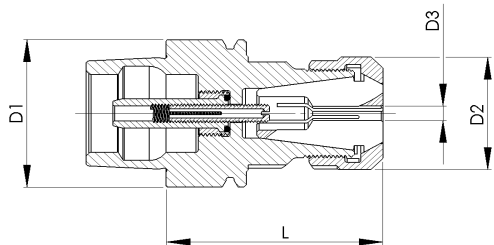
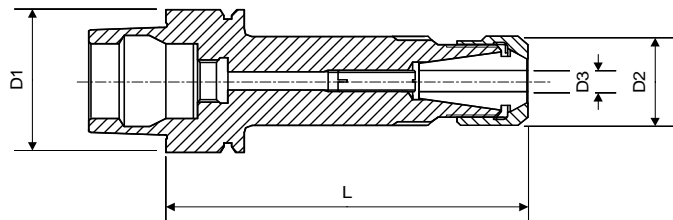


Fig. 2

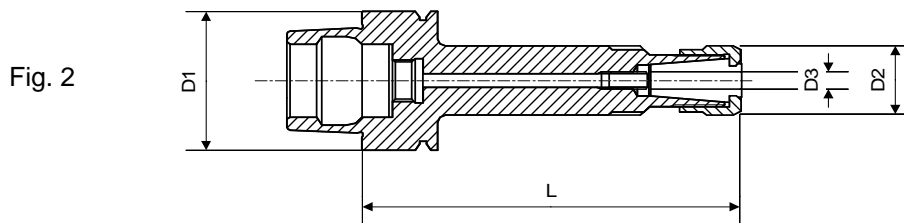
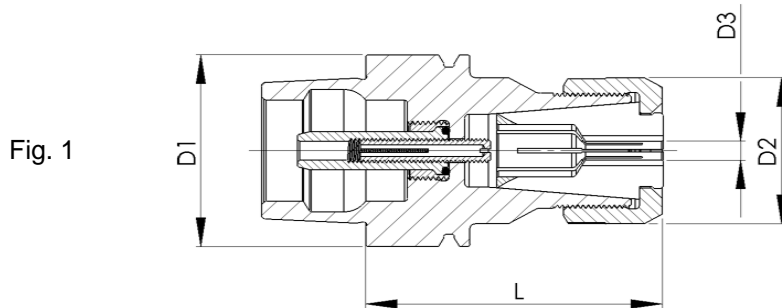


équilibré  
ausgewuchtet  
balanced

G2.5 à 42'000 1/min  
G2.5 bei 42'000 1/min  
G2.5 at 42'000 1/min

D1	Art.	L	D2	D3	Pince Spannzange Collet	Ecrou équilibré gewuchtete Mutter balanced nut	Clé Schlüssel Spanner	Bouchon Verschluss Plug
HSK - E40	87-40060 fig. 2	60	13.5	0.5-5	EX9 75-09200 ESX9 75-09300	61-09721	-	-
	87-40051 fig. 1	54	25	0.5-10	EX16 75-16200 ESX16 75-16300 ET1-16... Ø + DIN, ISO, J	61-16721	-	87-40912
	87-40053 fig. 1	60	42	0.5-16	EX25 75-25200 ESX25 75-25300 ET1-25... Ø + DIN, ISO, J	61-25720	61-25800	87-40912

Porte-pinces, pinces et écrous D  
Spannzangenhalter, Zangen und Muttern D  
Collet chucks, collets and nuts D

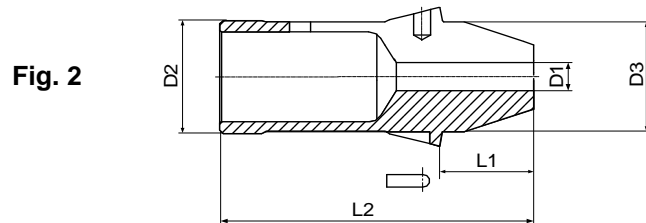
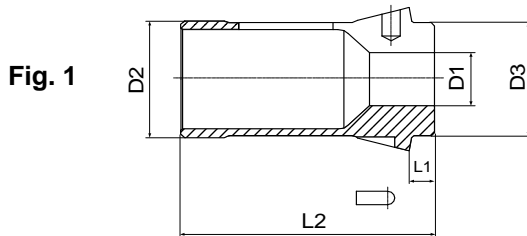


équilibré  
ausgewuchtet  
balanced

G2.5 à 42'000 1/min  
G2.5 bei 42'000 1/min  
G2.5 at 42'000 1/min

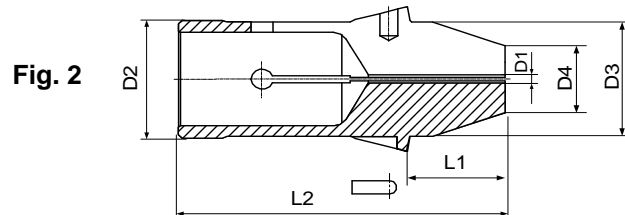
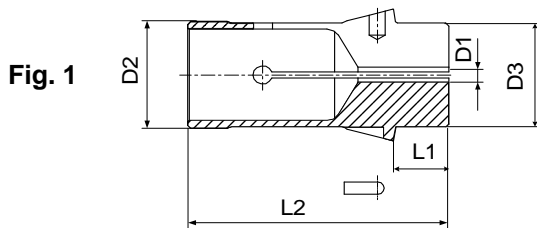
D1	Art.	L	D2	D3	Pince Spannzange Collet	Ecrou Mutter Nut	Extracteur Zangenaustreiber Extractor	Bouchon Verschluss Plug
HSK - E40	87-40002 fig. 1	43	13.5	0.5-5	74-08000	68-08700	74-08902	-
	87-40012 fig. 2	70	13.5	0.5-5	74-08000	68-08700	74-08902	-
	87-40004 fig. 1	42	20	0.5-7	74-12000	68-12700	74-12902	-
	87-40016 fig. 1	52	27	0.5-10	74-16000	68-16700	74-16902	-
	87-40007 fig. 1	57	30.5	0.5-12.7	74-20000	68-20700	74-20902	87-40912
	87-40028 fig. 1	58	36	0.5-16	74-24000	68-24700	74-24902	87-40912

**Pincès matière avec alésage fini**  
**Werkstückspannzangen mit geschliffener Bohrung**  
**Workholding collets with finished bore**



Pince Spannzange Collet		D1	D2	D3	L1	L2	Fentes Schlitze Slots	Fig.
F 35	<b>76-02010</b>	14.00-30.00	35	34	7	70	3	1
	<b>76-02013</b>	4.00-27.70	35	34	27	90	3	2

**Pincès à bec pour électro-érosion avec alésage ébauchée**  
**Schnabelspannzange für Elektroerosion mit roher Bohrung**  
**Nose collet for EDM with blank bore**



Pince Spannzange Collet		D1	D2	D3	D4	L1	L2	Fentes Schlitze Slots	Fig.
F 35	<b>76-02011</b>	2.5	35	34	12 20	27	90	4	2
F 35	<b>76-02012</b>	5	35	34	-	19.8	80	4	1

Alésages standards selon liste de prix - Standardbohrungen gemäss Preisliste - Standard bores according to pricelist  
Autres alésages sur demande - Andere Bohrungen auf Anfrage - Other bores on request

Pince matière  
Werkstückspannzange  
Workholding collet



Fig. 1

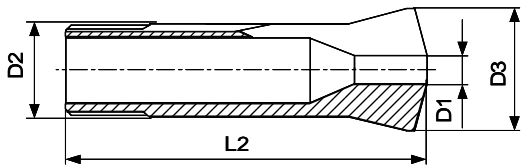
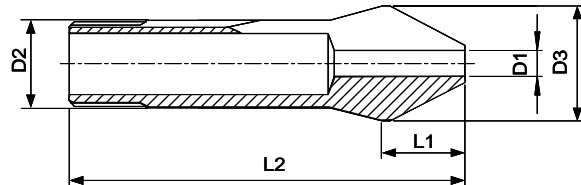
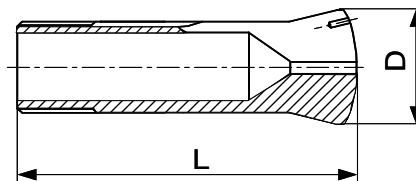


Fig. 2



Pince Spannzange Collet		D1	D2	D3	L1	L2	Fig.
W 31.75	<b>80-00842</b>	0.50-31.00	31.75	37.4	-	87	1
	<b>80-02007</b>	0.30-28.00	31.75	37.4	25	108.7	2

Pince de dépannage (corps trempé, tête tendre)  
Notfallspannzange (Schaft gehärtet, Kopf weich)  
Emergency collet (shank hardened, soft head)



Pince de dépannage Notfallspannzange Emergency collet		D	L	
W 31.75	<b>80-52531</b>	37.4	87	



### Broche DIN 69893 HSK - E40

n = 50 - 30000 1/min  
P = 10 kW  
M = 4.2 Nm

La longueur maximum avec l'outil ne doit pas dépasser 95 mm à partir du nez de broche.

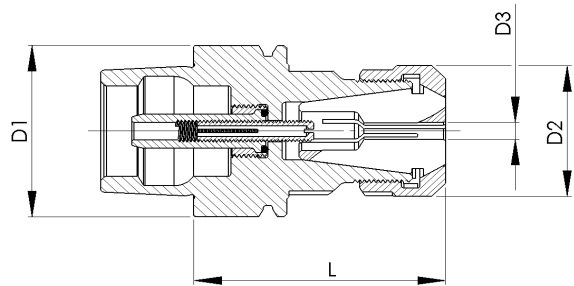
Die Maximallänge ab Spindelnase darf inklusive Werkzeug 95 mm nicht überschreiten.

The total length including the tool should not exceed 95 mm measured from the spindle nose.

### Porte-pinces, pinces et écrous E Spannzangenhalter, Zangen und Muttern E Collet chucks, collets and nuts E

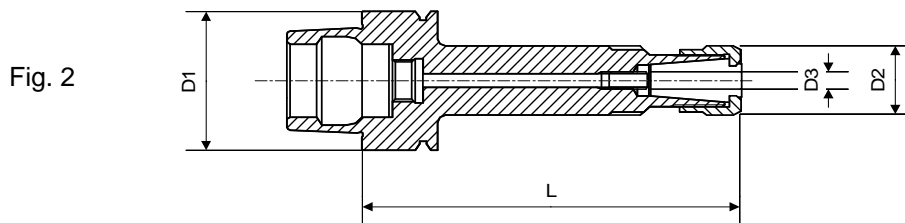
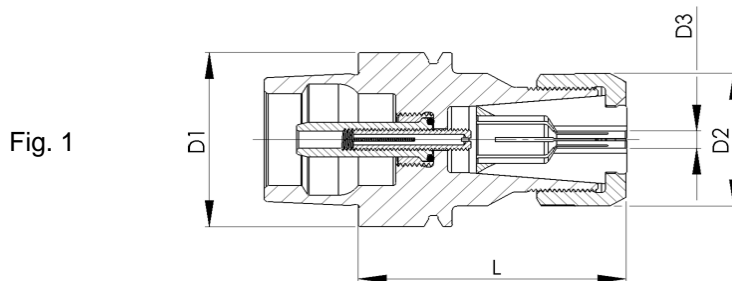
équilibré  
ausgewuchtet  
balanced

G2.5 à 42'000 1/min  
G2.5 bei 42'000 1/min  
G2.5 at 42'000 1/min



D1	Art.	L	D2	D3	Pince Spannzange Collet	Ecrou équilibré gewuchtete Mutter balanced nut	Clé Schlüssel Spanner	Bouchon Verschluss Plug
HSK - E40	87-40051	54	25	0.5-10	EX16 75-16200 ESX16 75-16300 ET1-16... Ø + DIN, ISO, J	61-16721	-	87-40912
	87-40053	60	42	0.5-16	EX25 75-25200 ESX25 75-25300 ET1-25... Ø + DIN, ISO, J	61-25720	61-25800	87-40912

Porte-pinces, pinces et écrous D  
Spannzangenhalter, Zangen und Muttern D  
Collet chucks, collets and nuts D

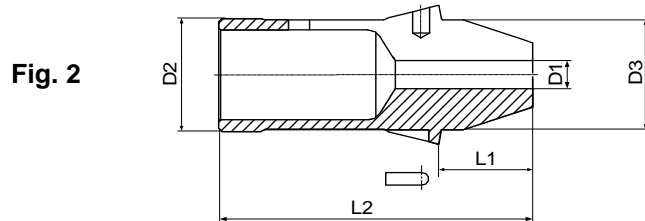
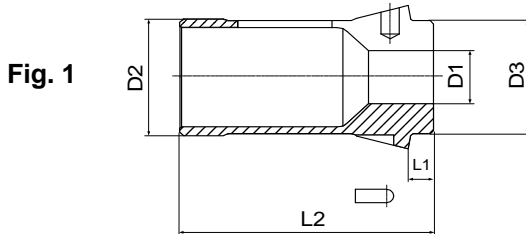


équilibré  
ausgewuchtet  
balanced

G2.5 à 42'000 1/min  
G2.5 bei 42'000 1/min  
G2.5 at 42'000 1/min

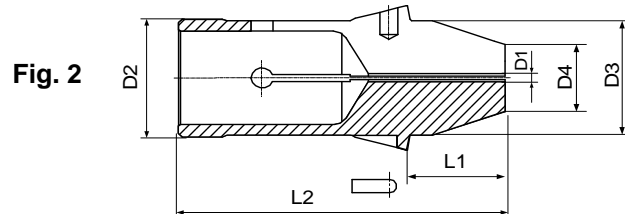
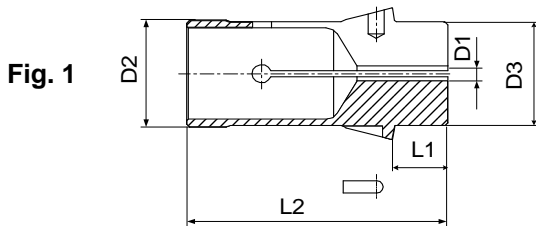
D1	Art.	L	D2	D3	Pince Spannzange Collet	Ecrou Mutter Nut	Extracteur Zangenaustreiber Extractor	Bouchon Verschluss Plug
HSK - E40	87-40002 fig. 1	43	13.5	0.5-5	74-08000	68-08700	74-08902	-
	87-40012 fig. 2	70	13.5	0.5-5	74-08000	68-08700	74-08902	-
	87-40004 fig. 1	42	20	0.5-7	74-12000	68-12700	74-12902	-
	87-40016 fig. 1	52	27	0.5-10	74-16000	68-16700	74-16902	-
	87-40007 fig. 1	57	30.5	0.5-12.7	74-20000	68-20700	74-20902	87-40912
	87-40028 fig. 1	58	36	0.5-16	74-24000	68-24700	74-24902	87-40912

**Pinces matière avec alésage fini**  
**Werkstückspannzangen mit geschliffener Bohrung**  
**Workholding collets with finished bore**



Pince Spannzange Collet		D1	D2	D3	L1	L2	Fentes Schlitze Slots	Fig.
F 27	<b>76-02040</b>	0.50-23.00	27	30	18.3	83	3	2
F 35	<b>76-02010</b>	14.00-30.00	35	34	7	70	3	1
	<b>76-02013</b>	4.00-27.70	35	34	27	90	3	2

**Pinces à bec pour électro-érosion (ébauche)**  
**Schnabelspannzange für Elektroerosion (roh)**  
**Nose collet for EDM (blank)**



Pince Spannzange Collet		D1	D2	D3	D4	L1	L2	Fentes Schlitze Slots	Fig.
F 27	<b>76-93594</b>	2.5	27	30	12 20	18.3	83	4	2
F 35	<b>76-02011</b>	2.5	35	34	12 20	27	90	4	2
F 35	<b>76-02012</b>	5	35	34	-	19.8	80	4	1

Alésages standards selon liste de prix - Standardbohrungen gemäss Preisliste - Standard bores according to pricelist  
Autres alésages sur demande - Andere Bohrungen auf Anfrage - Other bores on request

Pince matière  
Werkstückspannzange  
Workholding collet



Fig. 1

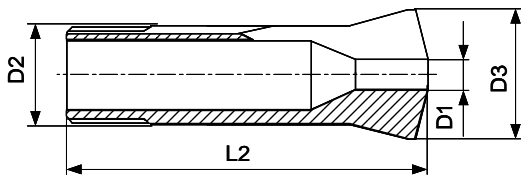
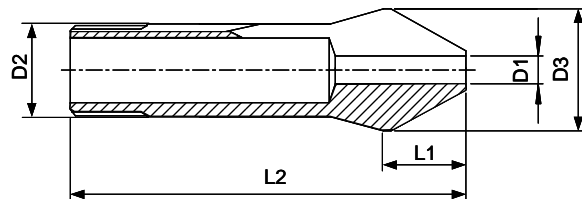
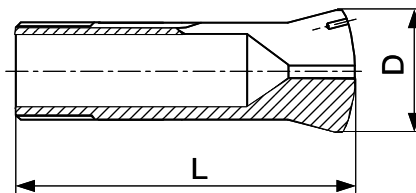


Fig. 2



Pince Spannzange Collet		D1	D2	D3	L1	L2	Fig.
W 31.75	<b>80-00842</b>	0.50-31.00	31.75	37.4	-	87	1
	<b>80-02007</b>	0.30-28.00	31.75	37.4	25	108.7	2

Pince de dépannage (corps trempé, tête tendre)  
Notfallspannzange (Schaft gehärtet, Kopf weich)  
Emergency collet (shank hardened, soft head)



Pince de dépannage Notfallspannzange Emergency collet		D	L	
W 31.75	<b>80-52531</b>	37.4	87	





### Broche DIN 69893 HSK - E40

n = 50 - 14000 1/min  
P = 3.3 kW  
M = 8 Nm

### Option : Broche DIN 69893 HSK - E40

n = 50 - 30000 1/min  
P = 10 kW  
M = 4.2 Nm

La longueur maximum avec l'outil ne doit pas dépasser 150 mm à partir du nez de broche.

Die Maximallänge ab Spindelnase darf inklusive Werkzeug 150 mm nicht überschreiten.

The total length including the tool should not exceed 150 mm measured from the spindle nose.

### Porte-pinces, pinces et écrous E Spannzangenhalter, Zangen und Muttern E Collet chucks, collets and nuts E

Fig. 1

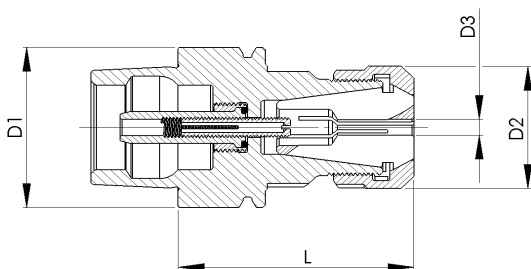
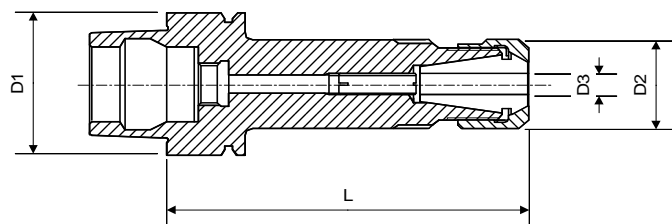


Fig. 2

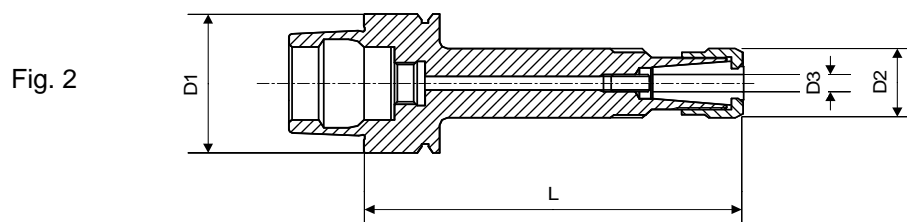
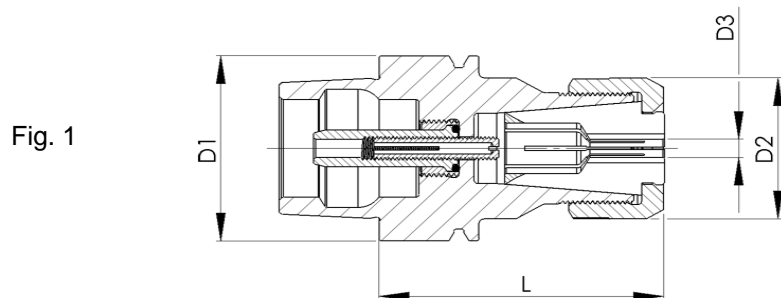


équilibré  
ausgewuchtet  
balanced

G2.5 à 42'000 1/min  
G2.5 bei 42'000 1/min  
G2.5 at 42'000 1/min

D1	Art.	L	D2	D3	Pince Spannzange Collet	Ecrou équilibré gewuchtete Mutter balanced nut	Clé Schlüssel Spanner	Bouchon Verschluss Plug
HSK - E40	<b>87-40060</b> fig. 2	60	13.5	0.5-5	EX9 75-09200 ESX9 75-09300	61-09721	-	-
	<b>87-40061</b> fig. 2	80	13.5	0.5-5	EX9 75-09200 ESX9 75-09300	61-09721	-	-
	<b>87-40051</b> fig. 1	54	25	0.5-10	EX16 75-16200 ESX16 75-16300 ET1-16... Ø + DIN, ISO, J	61-16721	-	87-40912
	<b>87-40054</b> fig. 1	66	25	0.5-10	EX16 75-16200 ESX16 75-16300 ET1-16... Ø + DIN, ISO, J	61-16721	-	-
	<b>87-40106</b> fig. 2	100	25	0.5-10	EX16 75-16200 ESX16 75-16300 ET1-16... Ø + DIN, ISO, J	61-16721	-	-
	<b>87-40065</b> fig. 1	58	30.5	0.5-13	EX20 75-20200 ESX20 75-20300 ET1-20... Ø + DIN, ISO, J	61-20721	-	87-40912
	<b>87-40053</b> fig. 1	60	42	0.5-16	EX25 75-25200 ESX25 75-25300 ET1-25... Ø + DIN, ISO, J	61-25720	61-25800	87-40912

Porte-pinces, pinces et écrous D  
Spannzangenhalter, Zangen und Muttern D  
Collet chucks, collets and nuts D

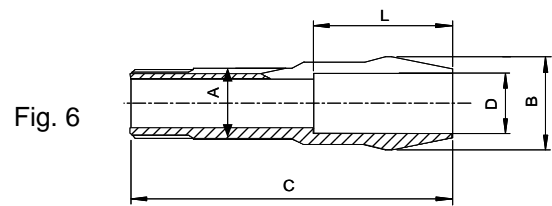
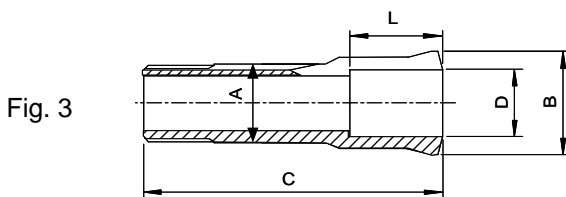
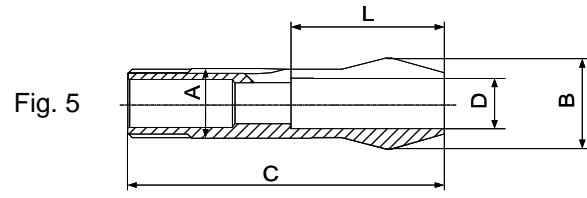
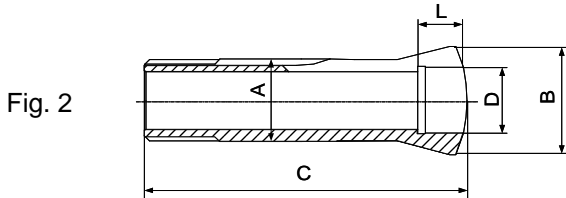
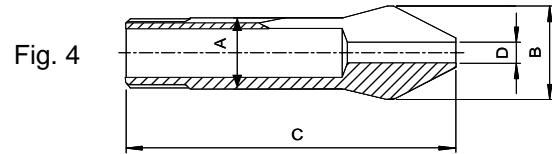
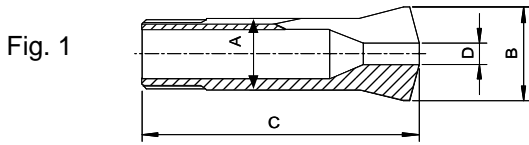


équilibré  
ausgewuchtet  
balanced

G2.5 à 42'000 1/min  
G2.5 bei 42'000 1/min  
G2.5 at 42'000 1/min

D1	Art.	L	D2	D3	Pince Spannzange Collet	Ecrou Mutter Nut	Extracteur Zangenaustreiber Extractor	Bouchon Verschluss Plug
HSK - E40	87-40002 fig. 1	43	13.5	0.5-5	74-08000	68-08700	74-08902	-
	87-40012 fig. 2	70	13.5	0.5-5	74-08000	68-08700	74-08902	-
	87-40004 fig. 1	42	20	0.5-7	74-12000	68-12700	74-12902	-
	87-40030 fig. 2	100	20	0.5-7	74-12000	68-12700	74-12902	-
	87-40016 fig. 1	52	27	0.5-10	74-16000	68-16700	74-16902	-
	87-40031 fig. 2	95	27	0.5-10	74-16000	68-16700	74-16902	-
	87-40007 fig. 1	57	30.5	0.5-12.7	74-20000	68-20700	74-20902	87-40912
	87-40028 fig. 1	58	36	0.5-16	74-24000	68-24700	74-24902	87-40912

## Pinces, Spannzangen, Collets W20



Alésage Bohrung Bore	D	L	Pince Spannzange Collet	Art.	A	B	C	Fig.
	0.30...14.50	-	W 20	<b>80-00004</b>	20	26.3	73	1
	14.51...16.00	28	W 20	<b>80-00107</b>				2
	16.01...20.00	24	W 20	<b>80-00107</b>				3
	0.30...13.00	-	W 20	<b>80-92744</b>	20	26.3	84.5	4
	13.01...16.00	41	W 20	<b>80-92744</b>				5
	16.01...20.00	37	W 20	<b>80-93286</b>				6

## Pinces de dépannage W20 Notfall-Spannzangen W20 Emergency collets W20

Fig. 1

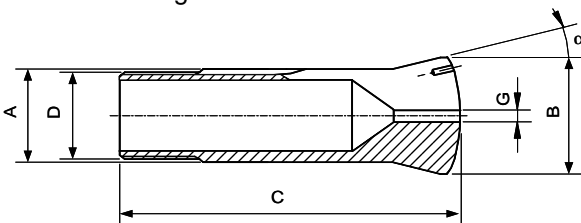
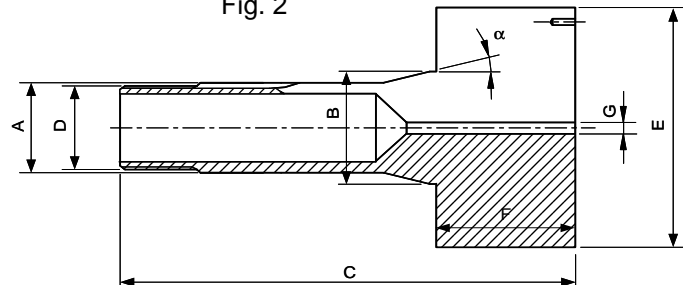


Fig. 2



Type	Art.	A	B	C	D	E	F	G	$\alpha$	Fig.
W 20 10) 80-4	<b>80-50300</b>	20	26.3	73	$\emptyset 19.7 \times 1.666$	-	-	2	$15^\circ$	1
	<b>80-50314</b> 1)									
	<b>80-52365</b>	20	26.3	105.6		47	35	6	$15^\circ$	2

1) Exécution en laiton - Ausführung in Messing - Brass execution



#### Broche ISO 25

n = 50 - 12000 1/min  
P = 6,6 kW  
M = 37 Nm

Porte-pinces E, pinces et écrous  
Spannzangenhalter E, Zangen und Muttern  
Collet chucks E, collets and nuts

Fig. 1

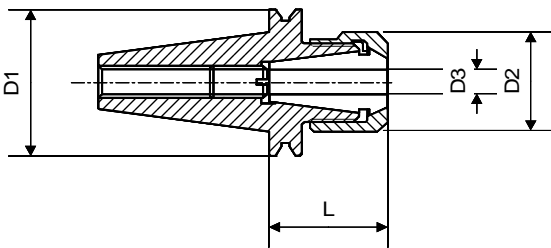
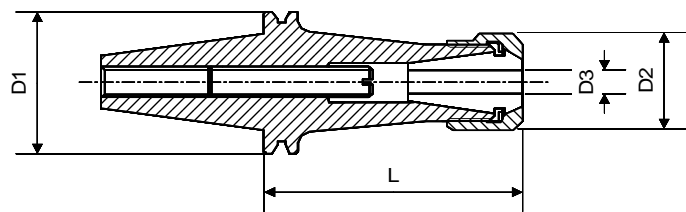


Fig. 2

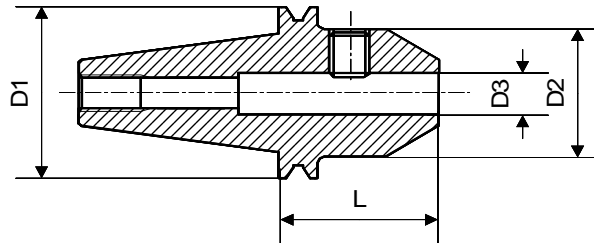


équilibré  
ausgewuchtet  
balanced

0,1 gmm

D1	Art.	L	D2	D3	Pince Spannzange Collet	Ecrou équilibré gewuchtete Mutter balanced Nut	Clé Schlüssel Spanner
ISO 25	<b>61-09400</b> fig. 1	41.3	13.5	0.5-5	EX9 75-09200 ESX9 75-09300	61-09721	-
	<b>61-16400</b> fig. 1	32.3	25	0.5-10	EX16 75-16200 ESX16 75-16300 ET1-16... Ø + DIN, ISO, J	61-16721	-
	<b>61-16401</b> fig. 2	62.3	25	0.5-10	EX16 75-16200 ESX16 75-16300 ET1-16... Ø + DIN, ISO, J	61-16721	-
	<b>61-20401</b> fig. 1	32.8	30.5	0.5-13	EX20 75-20200 ESX20 75-20300 ET1-20... Ø + DIN, ISO, J	61-20721	-
	<b>61-25401</b> fig. 1	46.3	42	0.5-16	EX25 75-25200 ESX25 75-25300 ET1-25... Ø + DIN, ISO, J	61-25720	61-25800
	<b>61-25405</b> fig. 2	63.3	42	0.5-16	EX25 75-25200 ESX25 75-25300 ET1-25... Ø + DIN, ISO, J	61-25720	61-25800

Porte-fraises pour queue cylindrique et méplat (Weldon)  
Fräserhalter für zylindrische Schäfte mit Mitnahmefläche (Weldon)  
Millholder for round shank with flat (Weldon)

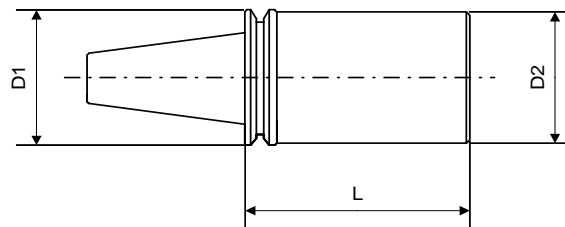


équilibré  
ausgewuchtet  
balanced

0,1 gmm

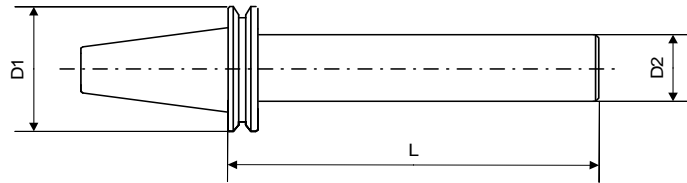
Gr.	Art.	L	D1	D2	D3
ISO 25	69-25403	23.3	37	20	3
	69-25404	24.3	37	22	4
	69-25405	24.3	37	22	5
	69-25406	31.3	37	25	6
	69-25408	32.3	37	28	8
	69-25410	35.3	37	35	10
	69-25412	38.3	37	37	12
	69-25414	38.3	37	37	14
	69-25416	47.3	37	45	16

Tasseau ébauché  
Rohling  
Blank



Gr.	Art.	L	D1	D2
ISO 25	89-25402	60.3	37	36.5

Tasseau de contrôle  
Kontrollhorn  
Checking arbor



Gr.	Art.	L	D1	D2	M
ISO 25	89-25401	75.3	37	20	61-99103

Tirant  
Zugbolzen  
Retention

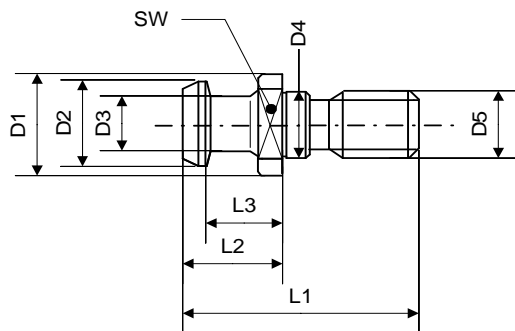


fig. 1

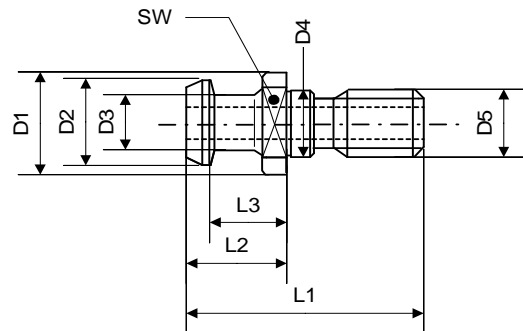
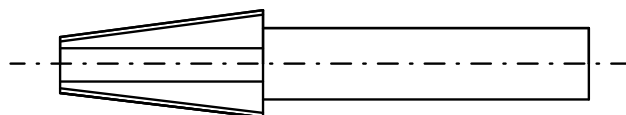


fig. 2

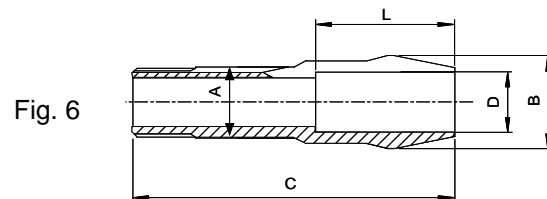
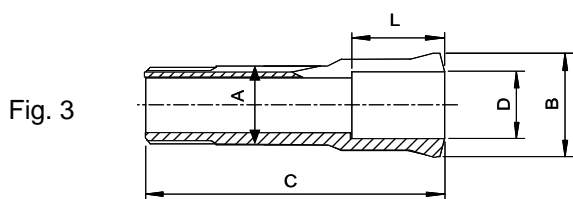
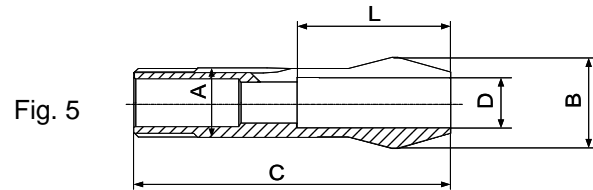
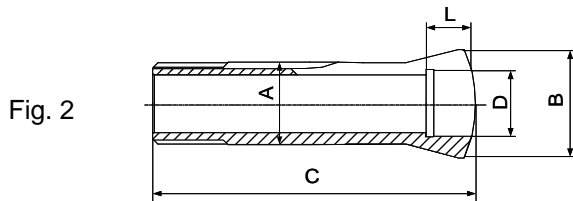
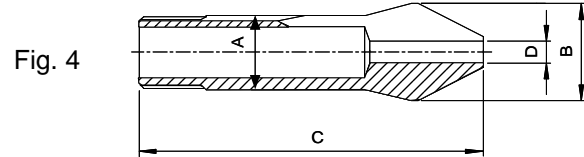
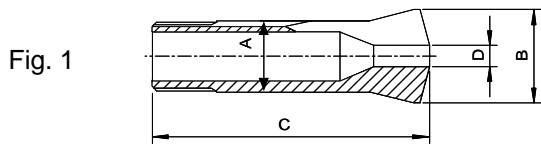
Gr.	Art.	L1	L2	L3	SW	D1	D2	D3	D4	D5	fig.
ISO 25	61-99103	28	12	9	11	13	11	7	8.5	M8	1
	89-12027	28	12	9	11	13	11	7	8.5	M8	2

Poignée de nettoyage  
Reinigungsdorn  
Cleaning handle



Gr.	Art.
ISO 25	89-03054

### Pinces, Spannzangen, Collets W20



Alésage Bohrung Bore	D	L	Pince Spannzange Collet	Art.	A	B	C	Fig.
	0.30...14.50	-	W 20	<b>80-00004</b>	20	26.3	73	1
	14.51...16.00	28						2
	16.01...20.00	24	W 20	<b>80-00107</b>				3
	0.30...13.00	-	W 20	<b>80-92744</b>	20	26.3	84.5	4
	13.01...16.00	41						5
	16.01...20.00	37	W 20	<b>80-93286</b>				6

### Pinces de dépannage W20 Notfall-Spannzangen W20 Emergency collets W20

Fig. 1

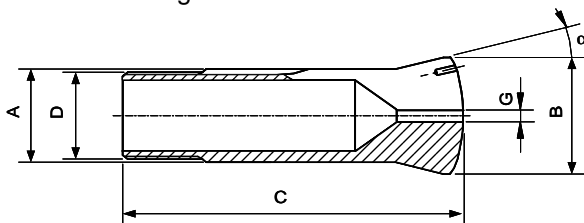
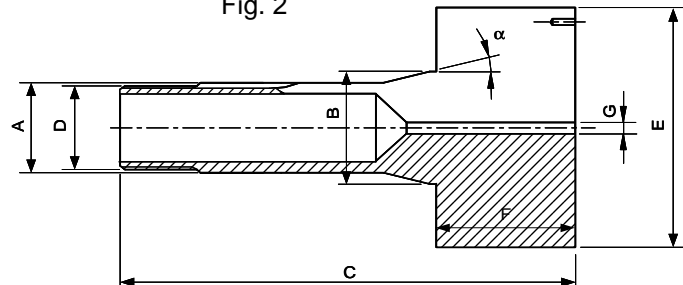


Fig. 2



Type	Art.	A	B	C	D	E	F	G	$\alpha$	Fig.
W 20 10) 80-4	<b>80-50300</b>	20	26.3	73	$\emptyset 19.7 \times 1.666$	-	-	2	$15^\circ$	1
	<b>80-50314</b> 1)									
	<b>80-52365</b>	20	26.3	105.6		47	35	6	$15^\circ$	2

1) Exécution en laiton - Ausführung in Messing - Brass execution