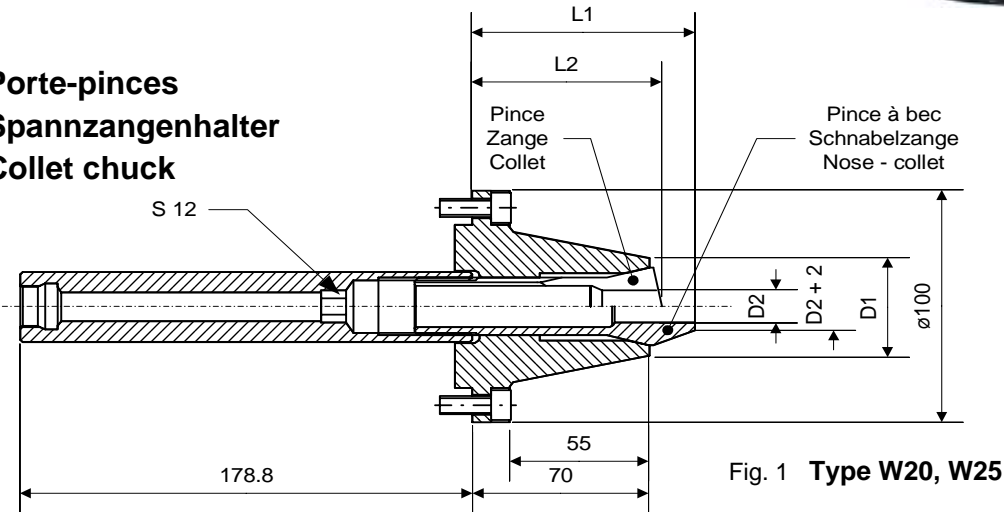


- Montage:**
1. Enlever le système de serrage ISO 50
 2. Visser la clé de serrage sur le piston, bloquer
 3. Visser et régler le porte-pinces
1. ISO 50 Spannsystem entfernen
 2. Spannschlüssel auf Kolbenstange schrauben, blockieren
 3. Spannzangenhalter aufschrauben und ausrichten
1. Remove the ISO 50 clamping device
 2. Screw the drawbar on the piston, secure
 3. Adjust the collet chuck and screw



**Porte-pinces
Spannzangenhalter
Collet chuck**



alésage outre
Durchgangsbohrung
through bore

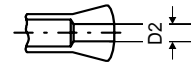
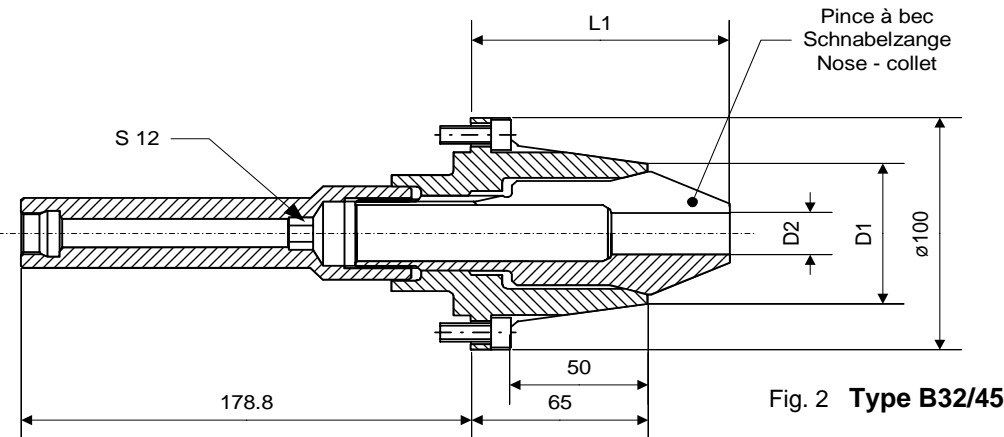


Fig. A



alésage à cran
Stufenbohrung
stepped bore

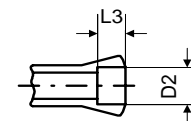


Fig. B

Type Typ Type	Fig.	Porte-pinces Sp.-zangenh. Collet chuck	D1	Pince Zange Collet	D2	L3	L2	Pince à bec Schnabelzange Nose - collet	D2	L3	L1
W20	1A	68-5128	32	80-4	0.30...14.50	-	74	80-92744	0.30...13.00	-	85.5
	1B			80-107	14.51...16.00	28			13.01...16.00	41	
	1B				16.01...20.00	24			16.01...20.00	37	
W25	1A	68-5129	42	80-5	0.30...19.05	-	75	80-92872	0.30...19.05	-	90
	1B				19.06...21.00	35			19.06...21.00	50	
	1B				21.01...25.40	30			21.01...25.40	47	
B32/45	2A	68-5130	59	-	-	-	-	72-2005	1.00...24.00	-	102.5
	2B									24.01...40.00	

**Butée de profondeur pour pinces W
Tiefenanschläge für Spannzangen W
Adjustable depth stops for collets W**

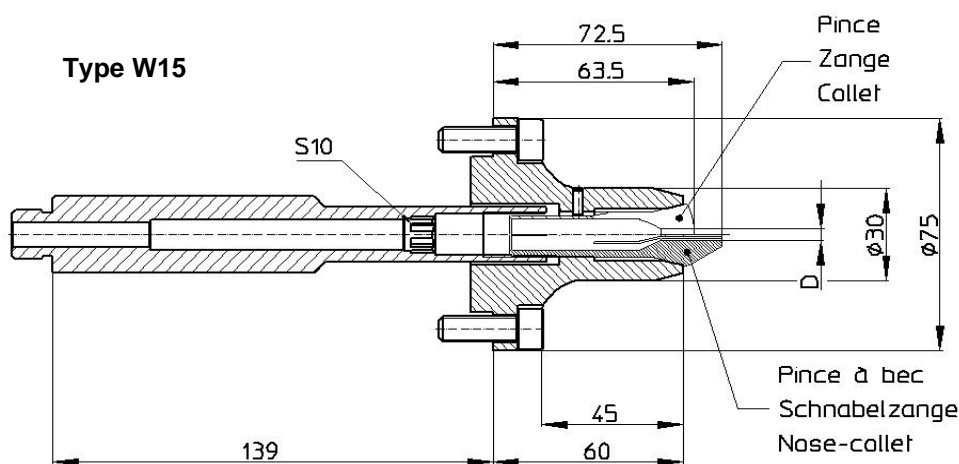
68-99107 W20
68-99110 W25



- Montage:**
1. Enlever le système de serrage ISO 50
 2. Visser la clé de serrage sur le piston, bloquer
 3. Visser et régler le porte-pinces
1. ISO 50 Spannsystem entfernen
 2. Spannschlüssel auf Kolbenstange schrauben, blockieren
 3. Spannzangenhalter aufschrauben und ausrichten
1. Remove the ISO 50 clamping device
 2. Screw the drawbar on the piston, secure
 3. Adjust the collet chuck and screw



Porte-pinces Spannzangenhalter Collet chuck



alésage outre
Durchgangsbohrung
through bore

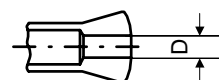
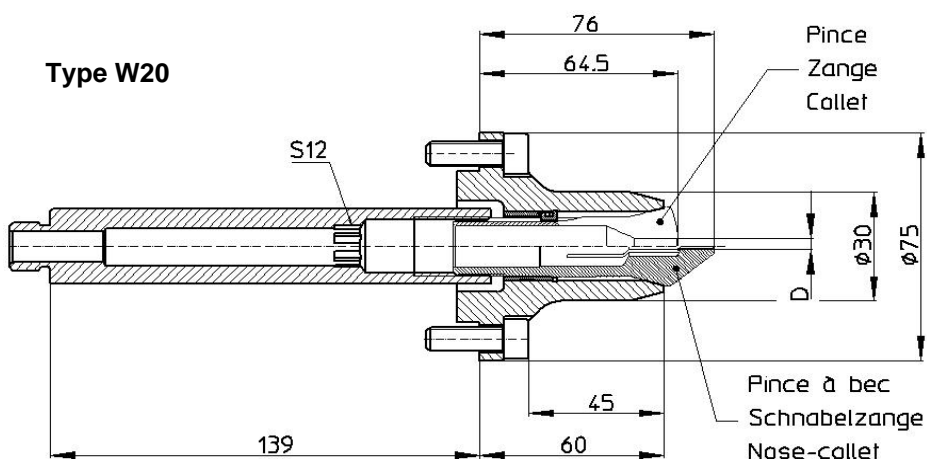


Fig. 1



alésage à cran
Stufenbohrung
stepped bore

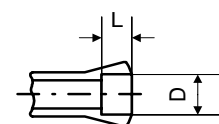


Fig. 2

Type Typ Type	Fig.	Porte-pinces Sp.-zangenh. Collet chuck	Pince Zange Collet	D	L	Pince à bec Schnabelzange Nose - collet	D	L
W15	1	68-05136	80-3	0.30...10.70	-	80-93285	0.30...10.20	-
	2			10.71...12.70	22		10.21...12.70	32
W20	1	68-05137	80-4	0.30...14.50	-	80-92744	0.30...13.00	-
	2			14.51...16.00	28		13.01...16.00	41
	2			16.01...20.00	24		16.01...20.00	37

**Butée de profondeur pour pinces W
Tiefenanschlätze für Spannzangen W
Adjustable depth stops for collets W**

68-99105 W15
68-99107 W20

