

Pincès matière
Werkstückspannzangen
Workholding collets



Fig. 1

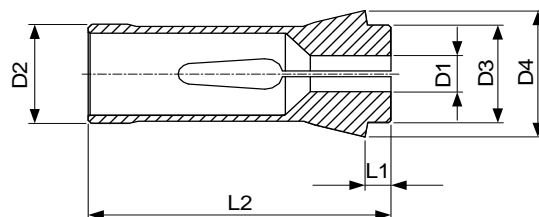
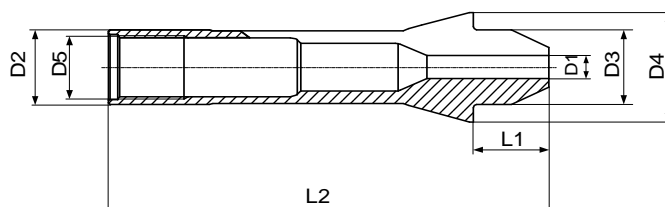


Fig. 2



Type	Art.	D1 min.- max.	D2	D3	D4	D5	L1	L2	Fig.
F 10	76-00086	0.3-8.0	10	10	15.5	-	5.5	47.5	1
	76-02021	0.3-7.0	10	10	15.5	M8 x 0.5	10	52	2
F 13	76-00357	0.3-10.0	13	13	19	-	6	64	1
	76-02014	0.3-8.0	13	13	19	M11 x 0.75	12	70	2

Pince de dépannage
Notfallspannzange
Emergency collet

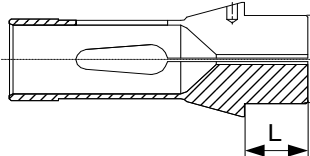
(tête prolongée)
(mit verlängertem Kopf)
(with longer head)

Type
Typ
Type

Art.

D

L



corps trempé, tête tendre
Schaft gehärtet, Kopf weich
shank hardened, soft head

F13

76-53002

13

12

Porte-pincès, pincès et écrous pour serrage d'outils

Spannzangenhalter, Spannzangen und Muttern für Werkzeugspannung

Collet chucks, collets and nuts for tool clamping

Porte-pince Spannzangenhalter Collet chuck	Pince Spannzange Collet	Ecrou Mutter Nut	Clé Schlüssel Spanner
Cylindrique $\varnothing 7 \times 73.2$ Zylindrisch Cylindrical	ESX-ER 11 EX 12 ESX 12 ET1-12*	75-11300 75-12200 75-12300 ET1-12...	61-11772 61-12710 61-11812 61-12801
Cylindrique $\varnothing 20 \times 180.6$ Zylindrisch Cylindrical	EX 16 ESX 16 ET1-16*	75-16200 75-16300 ET1-16...	61-16772 61-16812
Cylindrique $\varnothing 25 \times 181.5$ Zylindrisch Cylindrical	EX 20 ESX 20 ET1-20*	75-20200 75-20300 ET1-20...	61-20772 61-20710 61-20812 61-20810
Cylindrique $\varnothing 20$ Zylindrisch Cylindrical	uniquement livré par Tornos nur bei Tornos erhältlich only delivered by Tornos (art. 572227)	B8	72-137

* Pince de taraudage PCM - PCM Gewindebohrzange - PCM tapping collet



Pinces matière
Werkstückspannzangen
Workholding collets



Fig 1

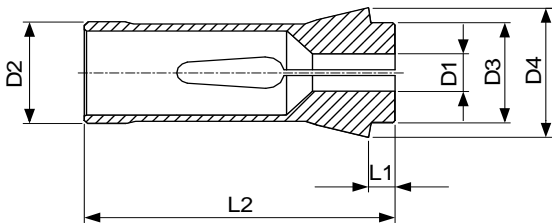


Fig 2

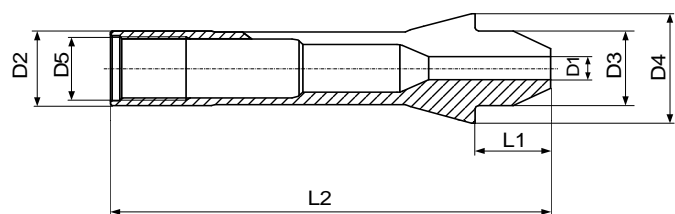


Fig 3

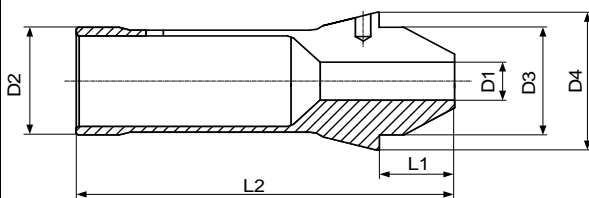
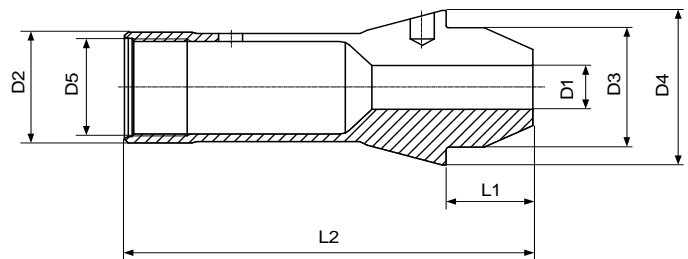
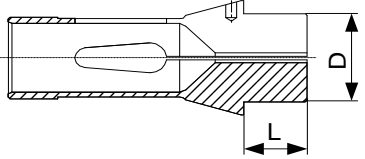


Fig 4



Type	Art.	D1 min.- max.	D2	D3	D4	D5	L1	L2	Fig.
F 13	76-00357	0.3-10.0	13	13	19	-	6	64	1
	76-02014	0.3-8.0	13	13	19	M11 x 0.75	12	70	2
F 15	76-00580	0.3-12.7	15	15	21	-	6	64	1
	76-02022	0.3-11.11	15	15	21	-	15	73	3
F 16	76-01076	0.3-13.0	16	16	21	-	6	64	1
	76-02015	0.3-12.0	16	16	21	M14 x 0.75	15	73	4
F 20	76-00201	0.5-16.5	20	19	26	-	5	54	1
	76-02016	0.5-15.0	20	19	26	-	13	62	3

Alésages standards selon liste de prix - Standardbohrungen gemäss Preisliste - Standard bores according to pricelist
Autres alésages sur demande - Andere Bohrungen auf Anfrage - Other bores on request

Pince de dépannage Notfallspannzange Emergency collet	(tête prolongée) (mit verlängertem Kopf) (with longer head)	Type Typ Type	Art.	D	L
	corps trempé, tête tendre	F13	76-53002	13	12
	Schaft gehärtet, Kopf weich shank hardened, soft head	F20	76-53003	19	15

Porte-pinces, pincés et écrous pour serrage d'outils
Spannzangenhalter, Spannzangen und Muttern für Werkzeugspannung
Collet chucks, collets and nuts for tool clamping

Porte-pince Spannzangenhalter Collet chuck	Pince Spannzange Collet	Ecrou Mutter Nut	Clé Schlüssel Spanner
Cylindrique $\varnothing 7 \times 73.2$ 61-12207 Zylindrisch Cylindrical	ESX-ER 11 75-11300 EX 12 75-12200 ESX 12 75-12300 ET1-12* ET1-12...	61-11772 61-12710	61-11812 61-12801
Cylindrique $\varnothing 20 \times 180.6$ 61-16233 Zylindrisch Cylindrical	EX 16 75-16200 ESX 16 75-16300 ET1-16* ET1-16...	61-16772	61-16812
Cylindrique $\varnothing 25 \times 181.5$ 61-20211 Zylindrisch Cylindrical	EX 20 75-20200 ESX 20 75-20300 ET1-20* ET1-20...	61-20772 61-20710	61-20812 61-20810
Cylindrique $\varnothing 25 \times 182$ 61-25216 Zylindrisch Cylindrical	EX 25 75-25200 ESX 25 75-25300 ET1-25* ET1-25...	61-25772	61-25812
Douille de réduction E20/E16 61-16611 Reduction sleeves Reduktionshülse	EX 16 75-16200 ESX 16 75-16300 ET1-16* ET1-16...	61-20691 61-16772	61-20800 61-16812
Cylindrique <i>uniquement livré par Tornos</i> Zylindrisch <i>nur bei Tornos erhältlich</i> Cylindrical <i>only delivered by Tornos</i> $\varnothing 20$ (art. 572227)	B8 72-137		

* Pince de taraudage PCM - PCM Gewindebohrzange - PCM tapping collet.

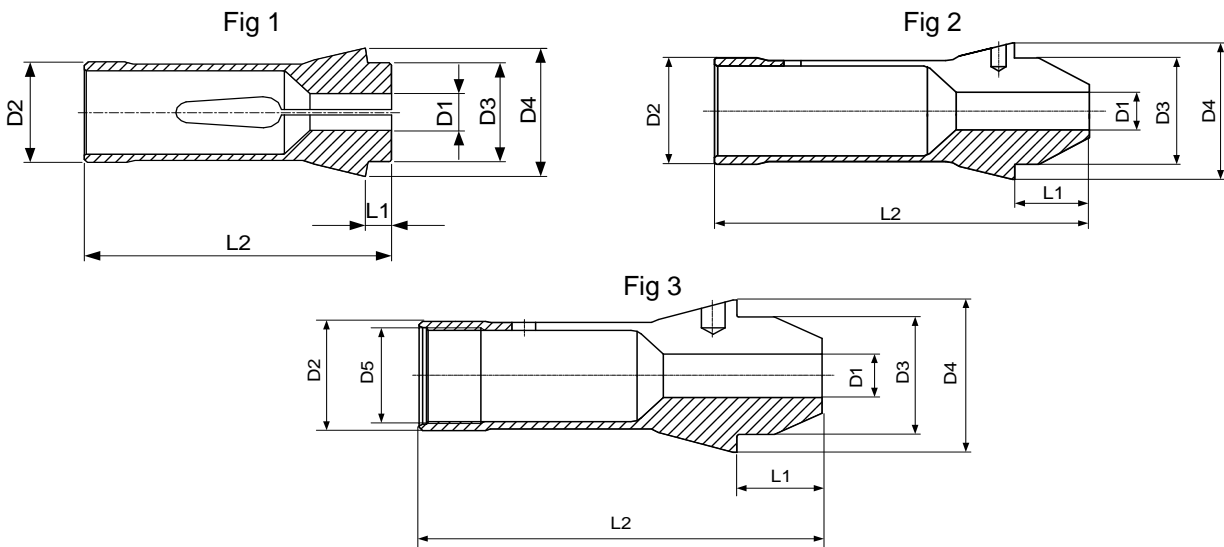
Deco 20a/20e



Sigma 20

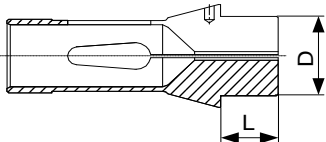


Pinces matière
Werkstückspannzangen
Workholding collets



Type	Art.	D1 min.- max. ○	D2	D3	D4	D5	L1	L2	Fig.
F 20	76-00201	0.5-16.5	20	19	26	-	5	54	1
	76-02016	0.5-15.0	20	19	26	-	13	62	2
F 25	76-00064	0.5-21.0	25	27	35	-	10	77	1
	76-02018	0.5-20.0	25	27	35	M22 x 1	18	85	3
F 30	76-00101	0.5-26.0	30	32	38	-	6	65	1
	76-02019	0.5-25.4	30	32	38	-	20	79	2

Alésages standards selon liste de prix - Standardbohrungen gemäss Preisliste - Standard bores according to pricelist
Autres alésages sur demande - Andere Bohrungen auf Anfrage - Other bores on request

Pince de dépannage Notfallspannzange Emergency collet	(tête prolongée) (mit verlängertem Kopf) (with longer head)	Type Typ Type	Art.	D	L
 <p>corps trempé, tête tendre Schaft gehärtet, Kopf weich shank hardened, soft head</p>		F20	76-53003	19	15
		F25	76-53004	27	18
		F30	76-53005	32	20

Porte-pinces, pinces et écrous pour serrage d'outils
Spannzangenhalter, Spannzangen und Muttern für Werkzeugspannung
Collet chucks, collets and nuts for tool clamping

Porte-pince Spannzangenhalter Collet chuck	Art.	Pince Spannzange Collet	Art.	Ecrou Mutter Nut	Clé Schlüssel Spanner
Cylindrique ∅ 7x73.2 Zylindrisch Cylindrical	61-12207	ESX-ER 11	75-11300	61-11772	61-11812
		EX 12	75-12200	61-12710	61-12801
		ESX 12	75-12300		
		ET1-12*	ET1-12...		
Cylindrique ∅ 20x180.6 Zylindrisch Cylindrical	61-16233	EX 16	75-16200	61-16772	61-16812
		ESX 16	75-16300		
		ET1-16*	ET1-16...		
Cylindrique ∅ 25x181.5 Zylindrisch Cylindrical	61-20211	EX 20	75-20200	61-20772	61-20812
		ESX 20	75-20300		
		ET1-20*	ET1-20...	61-20710	61-20810
Cylindrique ∅ 25x182 Zylindrisch Cylindrical	61-25216	EX 25	75-25200		
		ESX 25	75-25300	61-25772	61-25812
		ET1-25*	ET1-25...		
Douille de réduction E25/E16 Reduction sleeves Reduktionshülse	61-16609	EX 16	75-16200	61-25691	61-25812
		ESX 16	75-16300	61-16772	61-16812
		ET1-16*	ET1-16...		

Porte-pinces à changement rapide ECR
Spannzangenhalter für Schnellwechselsystem ECR
Collet chucks for quick change system ECR



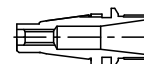
Le système à changement rapide est composé de 3 éléments : le corps de base, l'écrou à changement rapide et l'embout interchangeable.

Das Schnellwechsel-System besteht aus 3 Teilen : dem Grundkörper, der Schnellwechsellmutter und dem auswechselbaren Einsatz.

3 elements compose the quick change system : basic holder, quick change nut and interchangeable adapter.

Système à changement rapide ECR
Schnellwechselsystem ECR
Quick change system ECR

Embout porte-pince
Spannzangeneinsatz
Collet chuck-adapter



Porte-outil de base Basic holder Grundkörper	Ecrou Mutter Nut	Clé Schlüssel Spanner	Embout Einsatz Adapter	Pince Spannzange Collet	Ecrou Mutter Nut	Clé Schlüssel Spanner		
Cylindrique Zylindrisch Cylindrical Ø 25x178.5	62-20009	62-20200	61-20802	62-20301	EX 16 75-16200 ESX 16 75-16300 ET1-16* ET1-16...	61-16710		
				62-20335	EX 20 75-20200 ESX 20 75-20300 ET1-20* ET1-20...		61-20772	61-20812
Broche Art. Tornos 429155 429097 Art. SCHAUBLIN 62-20011	62-20205	61-20800	62-20301	EX 16 75-16200 ESX 16 75-16300 ET1-16* ET1-16...	61-16710			
				62-20335			EX 20 75-20200 ESX 20 75-20300 ET1-20* ET1-20...	61-20772
Broche Art. Tornos 429190 429121 429162 Art. SCHAUBLIN 62-25021	62-25205	62-25800	62-25346	EX 12 75-12200 ESX 12 75-16200 ET1-12* ET1-12...	61-12730			
			62-25337	EX 16 75-16200 ESX 16 75-16300 ET1-16* ET1-16...			61-16710	
			62-25300	EX 20 75-20200 ESX 20 75-20300 ET1-20* ET1-20...				61-20730
			62-25309	EX 25 75-25200 ESX 25 75-25300 ET1-25* ET1-25...			61-25730	61-25800

* Pince de taraudage PCM - PCM Gewindebohrzange - PCM tapping collet

Deco 26a/26e



Sigma 32



Pincés matière
Werkstückspannzangen
Workholding collets

Fig 1

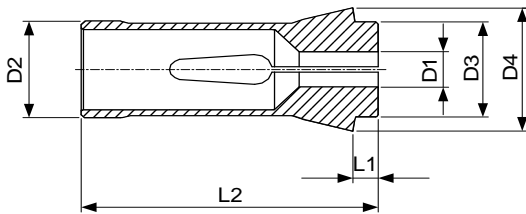


Fig 2

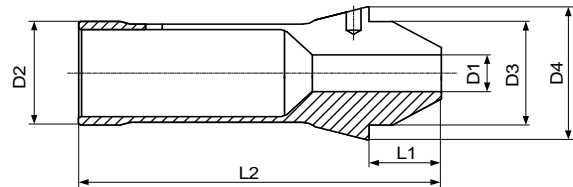
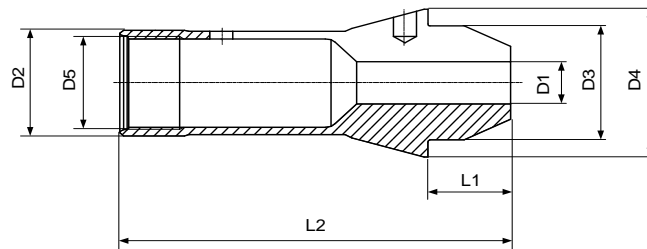
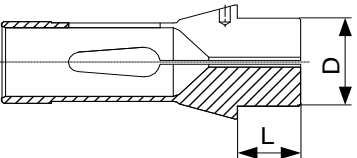


Fig 3



Type	Art.	D1 min.- max.	D2	D3	D4	D5	L1	L2	Fig.
F 25	76-00064	0.5-21.0	25	27	35	-	10	77	1
	76-02018	0.5-20.0	25	27	35	M22 x 1	18	85	3
F 30	76-00101	0.5-26.0	30	32	38	-	6	65	1
	76-02019	0.5-25.4	30	32	38	-	20	79	2
F 37	76-00740	1.0-32.0	37	40	47	-	10	92	1
	76-02020	1.0-32.0	37	40	47	-	20	102	2

Alésages standards selon liste de prix - Standardbohrungen gemäss Preisliste - Standard bores according to pricelist
Autres alésages sur demande - Andere Bohrungen auf Anfrage - Other bores on request

Pince de dépannage Notfallspannzange Emergency collet	(tête prolongée) (mit verlängertem Kopf) (with longer head)	Type Typ Type	Art.	D	L
 <p>corps trempé, tête tendre Schaft gehärtet, Kopf weich shank hardened, soft head</p>	F25	76-53004	27	18	
	F30	76-53005	32	20	
	F37	76-53006	40	20	

Porte-pinces, pinces et écrous pour serrage d'outils
Spannzangenhalter, Spannzangen und Muttern für Werkzeugspannung
Collet chucks, collets and nuts for tool clamping

Porte-pince Spannzangenhalter Collet chuck	Pince Spannzange Collet	Ecrou Mutter Nut	Clé Schlüssel Spanner
Cylindrique \varnothing 7x73.2 Zylindrisch Cylindrical	61-12207	ESX-ER 11 75-11300	61-11772 61-11812
		EX 12 75-12200	61-12710 61-12801
		ESX 12 75-12300	
Cylindrique \varnothing 20x180.6 Zylindrisch Cylindrical	61-16233	ET1-12* ET1-12...	
		EX 16 75-16200	61-16772 61-16812
		ESX 16 75-16300	
Cylindrique \varnothing 25x181.5 Zylindrisch Cylindrical	61-20211	ET1-16* ET1-16...	
		EX 20 75-20200	61-20772 61-20812
		ESX 20 75-20300	61-20710 61-20810
Cylindrique \varnothing 25x182 Zylindrisch Cylindrical	61-25216	ET1-20* ET1-20...	
		EX 25 75-25200	61-25772 61-25812
		ESX 25 75-25300	
Douille de réduction E25/E16 Reduction sleeves Reduktionshülse	61-16609	ET1-25* ET1-25...	
		EX 16 75-16200	61-25691 61-25812
		ESX 16 75-16300	61-16772 61-16812
	ET1-16* ET1-16...		

Porte-pinces à changement rapide ECR
Spannzangenhalter für Schnellwechselsystem ECR
Collet chucks for quick change system ECR



Le système à changement rapide est composé de 3 éléments : le corps de base, l'écrou à changement rapide et l'embout interchangeable.

Das Schnellwechsel-System besteht aus 3 Teilen : dem Grundkörper, der Schnellwechsellmutter und dem auswechselbaren Einsatz.

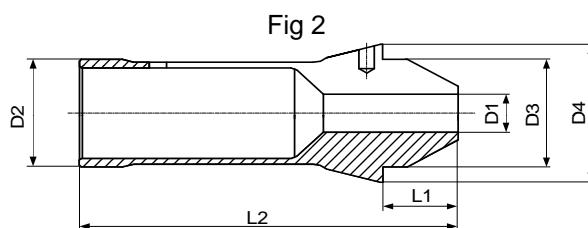
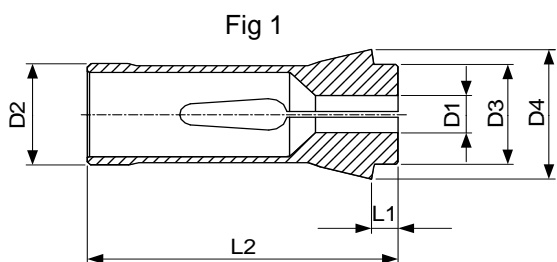
3 elements compose the quick change system : basic holder, quick change nut and interchangeable adapter.

Système à changement rapide ECR Schnellwechselsystem ECR Quick change system ECR			Embout porte-pince Spannzangeneinsatz Collet chuck-adapter				
Porte-outil de base Basic holder Grundkörper	Ecrou Mutter Nut	Clé Schlüssel Spanner	Embout Einsatz Adapter	Pince Spannzange Collet	Ecrou Mutter Nut	Clé Schlüssel Spanner	
Cylindrique Zylindrisch Cylindrical Ø 25x178.5	62-20009	62-20200	61-20802	62-20301	EX 16 75-16200 ESX 16 75-16300 ET1-16* ET1-16...	61-16710	
			62-20335	EX 20 75-20200 ESX 20 75-20300 ET1-20* ET1-20...	61-20772	61-20812	

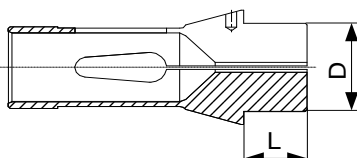
* Pince de taraudage PCM - PCM Gewindebohrzange - PCM tapping collet



Pinces matière
Werkstückspannzangen
Workholding collets



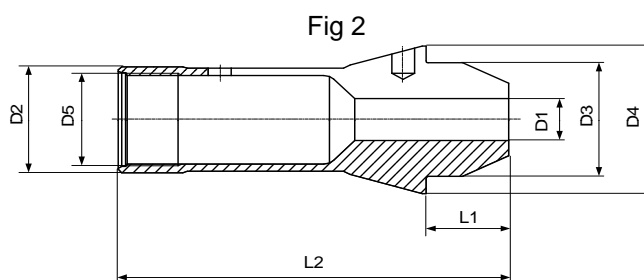
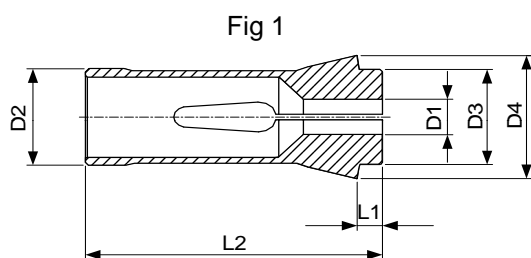
Type	Art.	D1 min.- max.	D2	D3	D4	D5	L1	L2	Fig.
F 20	76-00201	0.5-16.5	20	19	26	-	5	54	1
	76-02016	0.5-15.0	20	19	26	-	13	62	2

Pince de dépannage Notfallspannzange Emergency collet	(tête prolongée) (mit verlängertem Kopf) (with longer head)	Type Typ Type	Art.	D	L
	corps trempé, tête tendre Schaft gehärtet, Kopf weich shank hardened, soft head	F20	76-53003	19	15

Alésages standards selon liste de prix - Standardbohrungen gemäss Preisliste - Standard bores according to pricelist
Autres alésages sur demande - Andere Bohrungen auf Anfrage - Other bores on request



Pinces matière
Werkstückspannzangen
Workholding collets



Type	Art.	D1 min.- max.	D2	D3	D4	D5	L1	L2	Fig.
F 25	76-00064	0.5-21.0	25	27	35	-	10	77	1
	76-02018	0.5-20.0	25	27	35	M22 x 1	18	85	2

Pince de dépannage
Notfallspannzange
Emergency collet

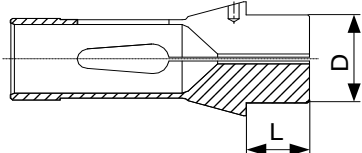
(tête prolongée)
(mit verlängertem Kopf)
(with longer head)

Type
Typ
Type

Art.

D

L



corps trempé, tête tendre
Schaft gehärtet, Kopf weich
shank hardened, soft head

F25

76-53004

27

18



**Pinces
Spannzangen
Collets**

Fig. 1

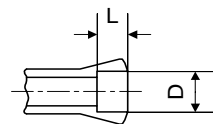
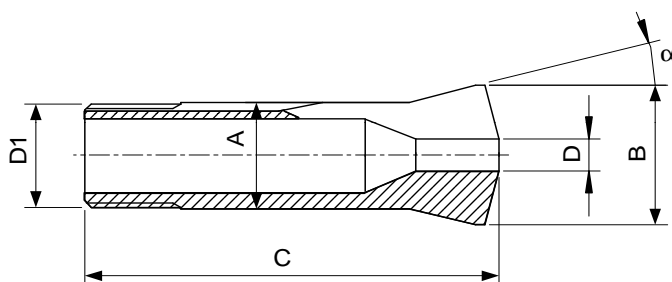
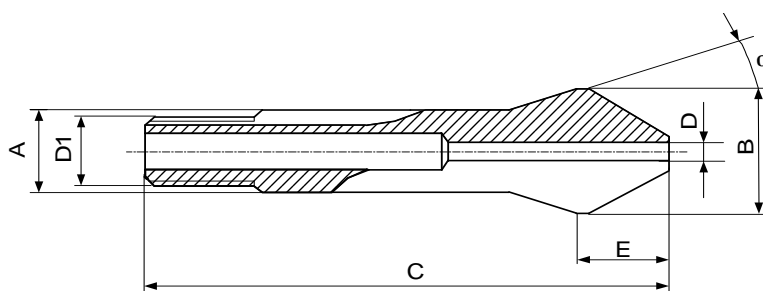


Fig. 2



Type	Art.	A	B	C	D1	E	α	Fig.	L	D min-max.
B 8	72-00137	8	13	35.5	\emptyset 6.82x0.625 \sphericalangle 55°	-	20°	1	-	0.30...4.00
									13	4.01...6.50
									6	6.51...7.00
									5	7.01...7.50
									4	7.51...8.00
									3.2	8.01...8.50
									2.5	8.51...9.00
									1.7	9.01...9.50
	72-00095	8	13	40.5	\emptyset 6.82x0.625 \sphericalangle 55°	7	20°	2	-	0.30...3.30
									21	3.31...6.50

Alésages standards selon liste de prix - Standardbohrungen gemäss Preisliste - Standard bores according to pricelist

Autres alésages sur demande - Andere Bohrungen auf Anfrage - Other bores on request

Pinces matière
Werkstückspannzangen
Workholding collets

Fig. 1

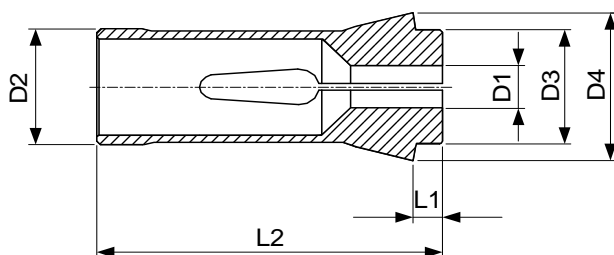
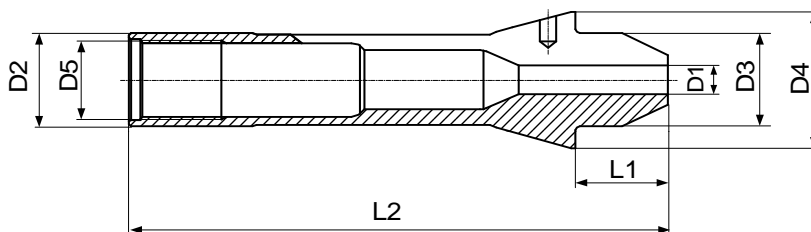
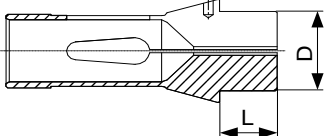


Fig. 2



Type	Art.	D1 min.- max.	D2	D3	D4	D5	L1	L2	Fig.
		○							
F10	76-00086	0.3-8.0	10	10	15.5	-	5.5	47.5	1
	76-02021	0.3-7.0	10	10	15.5	M8 x 0.5	10	52	2
F13	76-00357	0.3-10.0	13	13	19	-	6	64	1
	76-02014	0.3-8.0	13	13	19	M11 x 0.75	12	70	2

Pince de dépannage Notfallspannzange Emergency collet	(tête prolongée) (mit verlängertem Kopf) (with longer head)	Type Typ Type	Art.	D	L
 <p>corps trempé, tête tendre Schaft gehärtet, Kopf weich shank hardened, soft head</p>		F13	76-53002	13	12

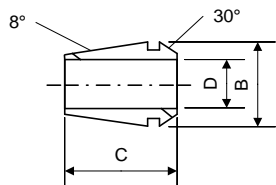
Alésages standards selon liste de prix - Standardbohrungen gemäss Preisliste - Standard bores according to pricelist
Autres alésages sur demande - Andere Bohrungen auf Anfrage - Other bores on request

Pinces outils DIN 6499
Werkzeugspannzangen DIN 6499
Tool collets DIN 6499

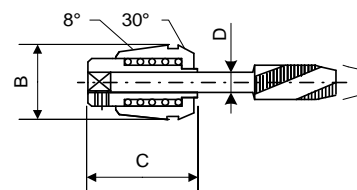
Pince de taraudage
Gewindebohrzangen
Tapping collets



Qualité standard
Standard Qualität
Standard quality



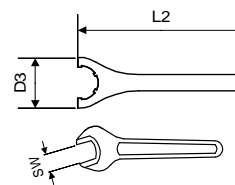
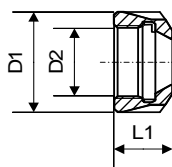
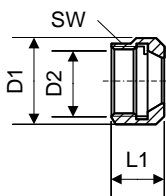
Qualité UP
UP Qualität
UP quality



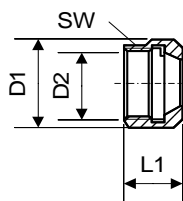
Pince - Spannzange - Collet		B	C	D	Fig.
ESX12	75-12300	12	19.5	1.00...7.00	1
EX12	75-12200	11.75	17.5	0.50...7.00	2
ET-1-12	selon \varnothing de queue gemäss Schaftdurchmesser according to \varnothing of shank	12	21.5	1.00...3.55	3

Ecrous - Muttern - Nuts EX

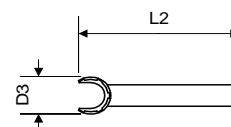
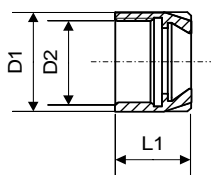
EX



EXP



EXM



Gr. / Typ	Ecrou - Mutter - Nut					Clé - Schlüssel - Spanner		
	Art.	D1	D2	L1	SW	Art.	D3	L2
EX 12	61-12730	19	M14x0.75	14	17	-	-	-
EXP 12	61-12710	16.7	M13x0.75	14	15	-	-	-
EXM 11	61-11772	16	M13x0.75	12.1	-	61-11812	16.8	90

Alésages standards selon liste de prix - Standardbohrungen gemäss Preisliste - Standard bores according to pricelist

Autres alésages sur demande - Andere Bohrungen auf Anfrage - Other bores on request



Pinces
Spannzangen
Collets

Fig. 1

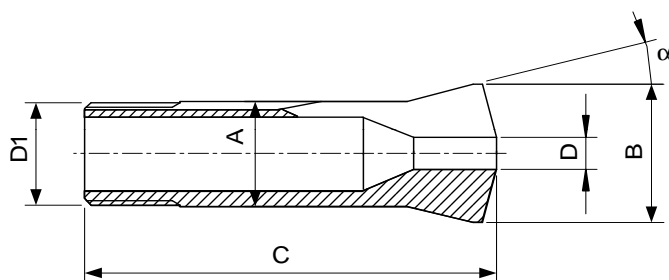
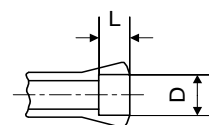
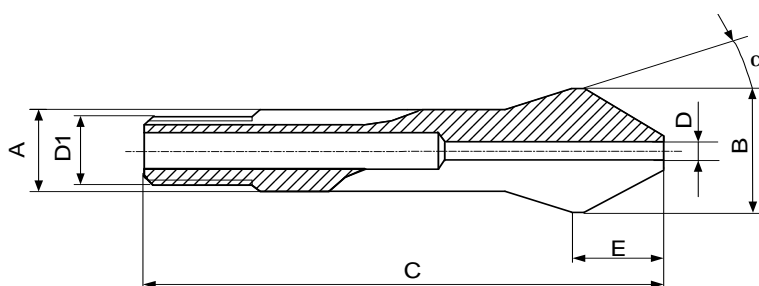


Fig. 2



Type	Art.	A	B	C	D1	E	α	Fig.	L	D min-max.
B 8	72-00137	8	13	35.5	\varnothing 6.82x0.625 \sphericalangle 55°	-	20°	1	-	0.30...4.00
									13	4.01...6.50
									6	6.51...7.00
									5	7.01...7.50
									4	7.51...8.00
									3.2	8.01...8.50
									2.5	8.51...9.00
									1.7	9.01...9.50
1	9.51...10.00									
B 8	72-00095	8	13	40.5	\varnothing 6.82x0.625 \sphericalangle 55°	7	20°	2	-	0.30...3.30
									21	3.31...6.50

Alésages standards selon liste de prix - Standardbohrungen gemäss Preisliste - Standard bores according to pricelist

Autres alésages sur demande - Andere Bohrungen auf Anfrage - Other bores on request

Pinces
Spannzangen
Collets

Fig. 1

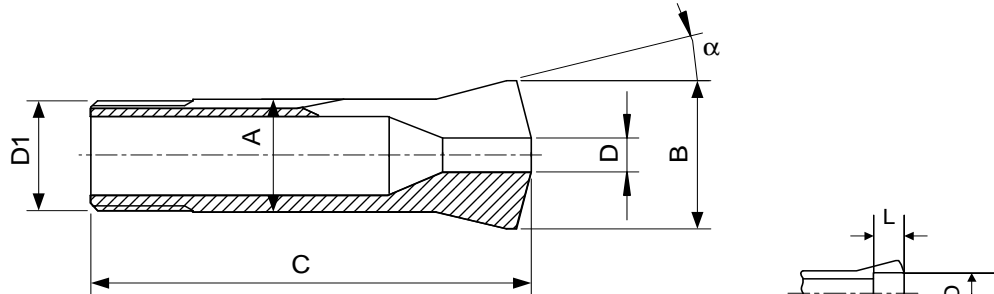
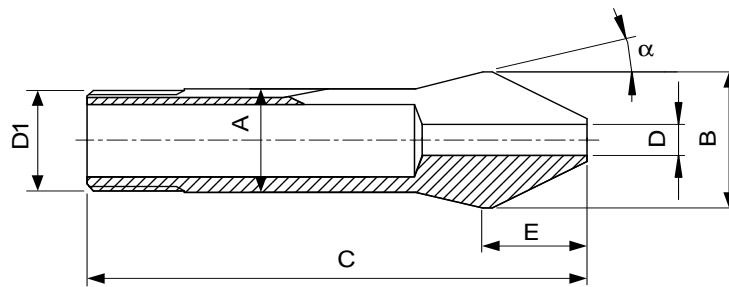


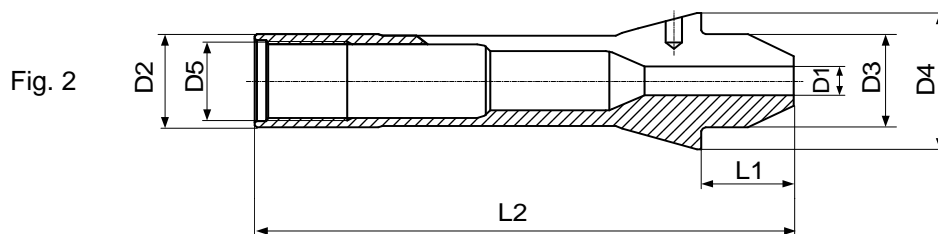
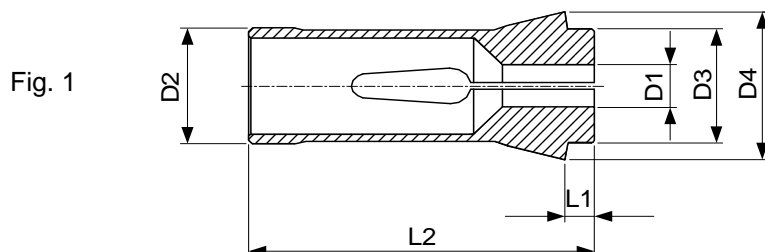
Fig. 2



Type	Art.	A	B	C	D1	E	α	Fig.	L	D min-max. ○
W15	80-00003	15	20.2	58.3	$\emptyset 14.75 \times 1.25 \text{ } \sphericalangle 45/5^\circ$	-	15°	1	-	0.30...10.70
									22	10.71...12.70
									9.5	12.71...13.00
									8.5	13.01...13.50
									7.5	13.51...14.00
									6.5	14.01...14.50
									5.5	14.51...15.00
									4.5	15.01...15.50
3.5	15.51...16.00									
	80-93285	15	20.2	67	$\emptyset 14.75 \times 1.25 \text{ } \sphericalangle 45/5^\circ$	12	15°	2	-	0.30...8.00
									24	8.01...10.00

Alésages standards selon liste de prix - Standardbohrungen gemäss Preisliste - Standard bores according to pricelist
Autres alésages sur demande - Andere Bohrungen auf Anfrage - Other bores on request

Pinces matière
Werkstückspannzangen
Workholding collets



Type	Art.	D1 min.- max.	D2	D3	D4	D5	L1	L2	Fig.
F10	76-00086	0.3-8.0	10	10	15.5	-	5.5	47.5	1
	76-02021	0.3-7.0	10	10	15.5	M8 x 0.5	10	52	2

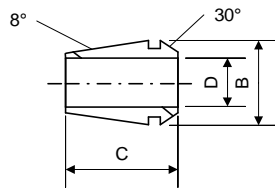
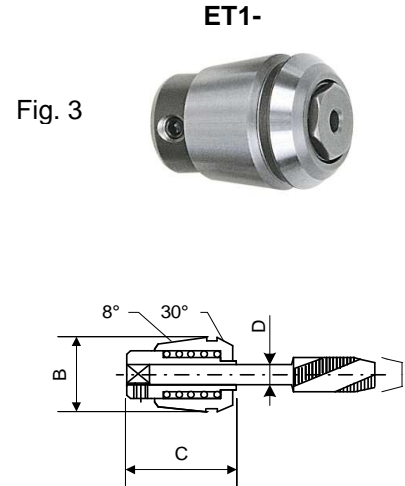
Pinces de contrebroche
Abgreifzange
Pick-up collet

Pince - Spannzange - Collet	Alésage - Bohrung - Bore
F13 76-93019* <i>Art. Tornos:</i> <i>AS 621211 Type A</i>	0.30...10.00
	1.00...9.00
	1.00...7.00

Alésages standards selon liste de prix - Standardbohrungen gemäss Preisliste - Standard bores according to pricelist
 Autres alésages sur demande - Andere Bohrungen auf Anfrage - Other bores on request

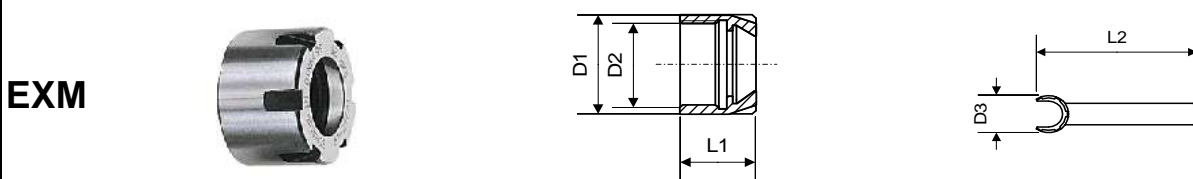
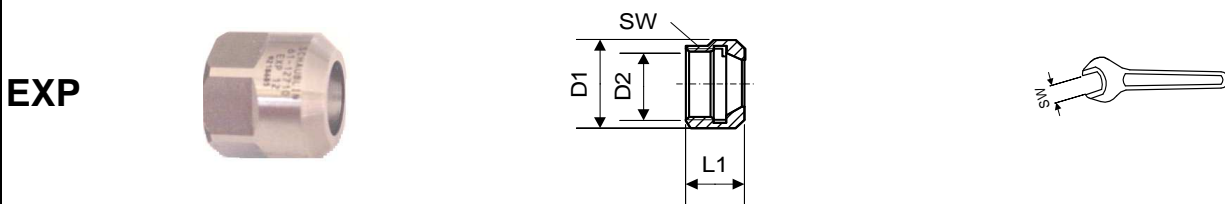
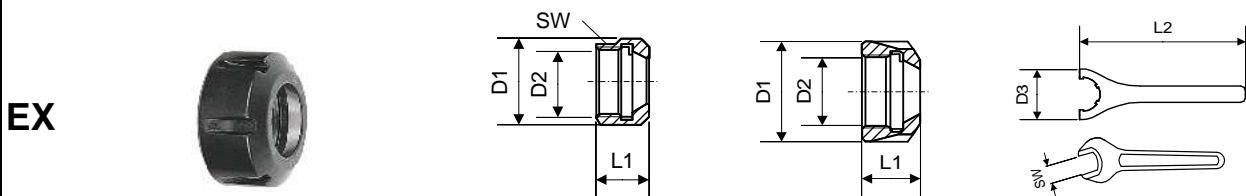
Pinces outils DIN 6499
Werkzeugspannzangen DIN 6499
Tool collets DIN 6499

Pince de taraudage
Gewindebohrzangen
Tapping collets



Pince - Spannzange - Collet	B	C	D	Fig.
ESX12 75-12300	12	19.5	1.00...7.00	1
EX12 75-12200	11.75	17.5	0.50...7.00	2
ET-1-12 selon \varnothing de queue gemäss Schaftdurchmesser according to \varnothing of shank	12	21.5	1.00...3.55	3

Ecrous - Muttern - Nuts EX



Gr. / Typ	Ecou - Mutter - Nut					Clé - Schlüssel - Spanner		
	Art.	D1	D2	L1	SW	Art.	D3	L2
EX 12	61-12730	19	M14x0.75	14	17	-	-	-
EXP 12	61-12710	16.7	M13x0.75	14	15	-	-	-
EXM 11	61-11772	16	M13x0.75	12.1	-	61-11812	16.8	90

Alésages standards selon liste de prix - Standardbohrungen gemäss Preisliste - Standard bores according to pricelist

Autres alésages sur demande - Andere Bohrungen auf Anfrage - Other bores on request

MULTIDECO 20/6b
MULTIDECO 20/8b



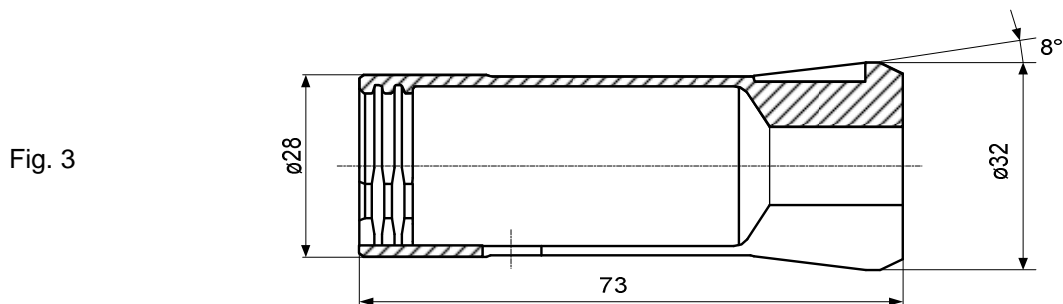
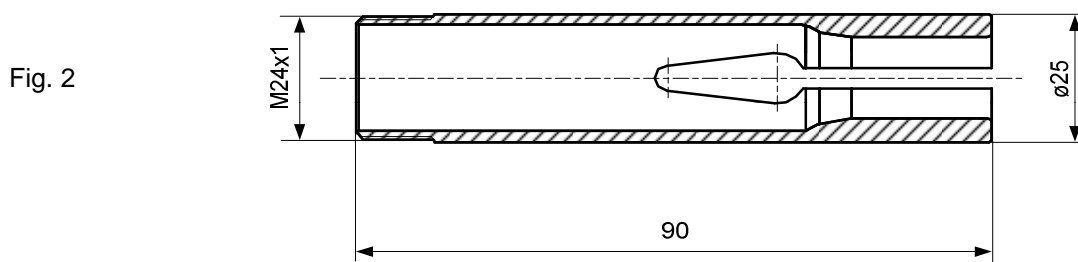
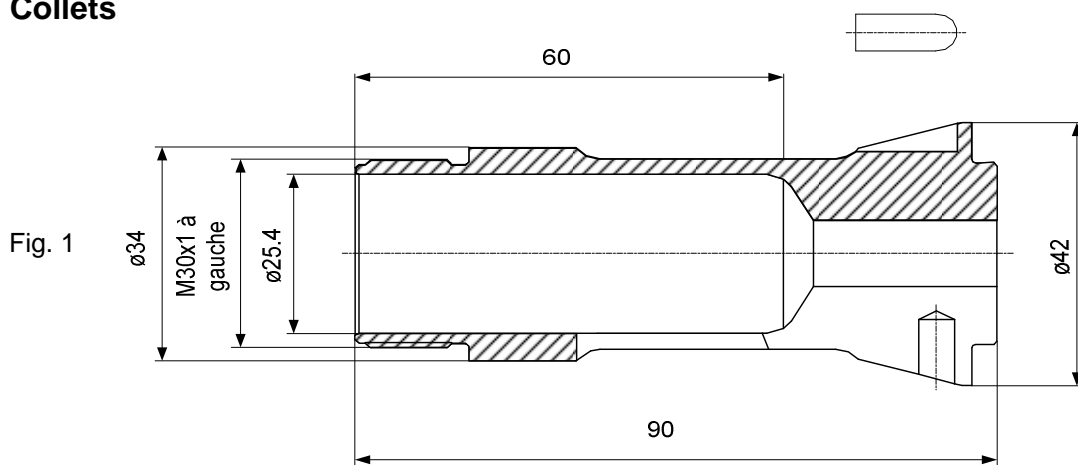
MultiAlpha 8x20

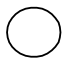
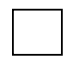
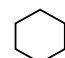


MultiSigma 8x24



Pinces
Spannzangen
Collets



Pince Spannzange Collet	Fig.	Type Typ Type	Article Artikel Article	Alésage max. Bohrung max. Bore max.			
Pince matière Werkstückspannzange Workholding collet	1	B34	72-1820		25	17.5	21.5
Pince d'avance Vorschubzange Feedfinger	2	A25	71-2018		20	14	17
Pince de reprise Abgreifzange Pick-up collet	3	PR28	78-2013		24.5	17	21

Alésages standards selon liste de prix - Standardbohrungen gemäss Preisliste - Standard bores according to pricelist
Autres alésages sur demande - Andere Bohrungen auf Anfrage - Other bores on request

Porte-pinces à changement rapide ECR
Spannzangenhalter für Schnellwechselsystem ECR
Collet chucks for quick change system ECR



Système à changement rapide ECR grandeur 20 Schnellwechselsystem ECR Grösse 20 Quick change system ECR size 20			Embout porte-pinces Spannzangeneinsatz Collet chuck-adaptor				
Porte-outil de base Grundkörper Basic holder	Ecrou Mutter Nut	Clé Schlüssel Spanner	Embout Einsatz Adapter	Pince Spannzange Collet	Ecrou Mutter Nut	Clé Schlüssel Spanner	
Cylindrique Zylindrisch Cylindrical Ø 25x178.5 62-20009	62-20200	61-20802	62-20301	EX 16 75-16200 ESX 16 75-16300 ET1-16* ET1-16...	61-16710		
			62-20335	EX 20 75-20200 ESX 20 75-20300 ET1-20* ET1-20...	61-20772	61-20812	
Système à changement rapide ECR grandeur 32 Schnellwechselsystem ECR Grösse 32 Quick change system ECR size 32			Embout porte-pinces Spannzangeneinsatz Collet chuck-adaptor				
Porte-outil de base Grundkörper Basic holder	Ecrou Mutter Nut	Clé Schlüssel Spanner	Embout Einsatz Adapter	Pince Spannzange Collet	Ecrou Mutter Nut	Clé Schlüssel Spanner	
Flasque Flansch Flange Ø 34/Ø 66 89-3327	Cylindrique Zylindrisch Cylindrical Ø 34/Ø 66 62-32038	62-32200	61-32800	62-32350	EX 16 75-16200 ESX16 75-16300 ET1-16* ET1-16...	61-16710	-
				62-32300	EX 25 75-25200 ESX25 75-25300 ET1-25* ET1-25...	61-25730	61-25800
	Cylindrique (sans flasque) Zylindrisch (ohne Flansch) Cylindrical (without flange) Ø 34/Ø 68 62-32036			62-32312	EX 32 75-32200 ESX 32 75-32300 ET1-32* ET1-32...	61-32730	61-32800
				Embout porte-fraises Weldon Weldon Fräseinsatz Weldon endmill adaptor			
				62-32328	Ø 6		
				62-32315	Ø 8		
				62-32316	Ø 10		
				62-32329	Ø 12		
				62-32318	Ø 16		
				62-32319	Ø 20		

* Pince de taraudage PCM - PCM Gewindebohrzange - PCM tapping collet

MULTIDECO 26/6



MULTIDECO 32/6i



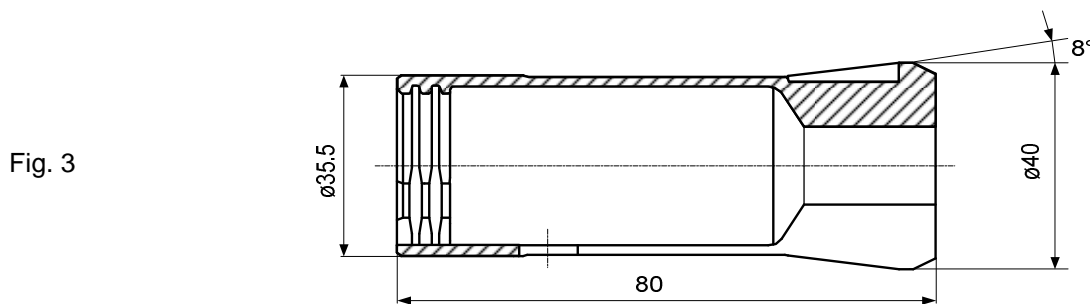
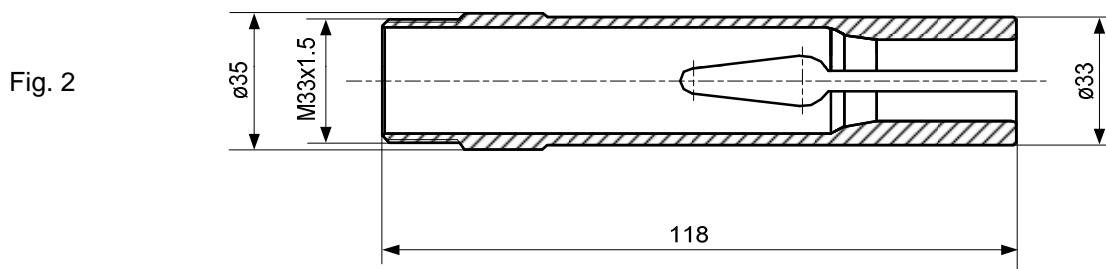
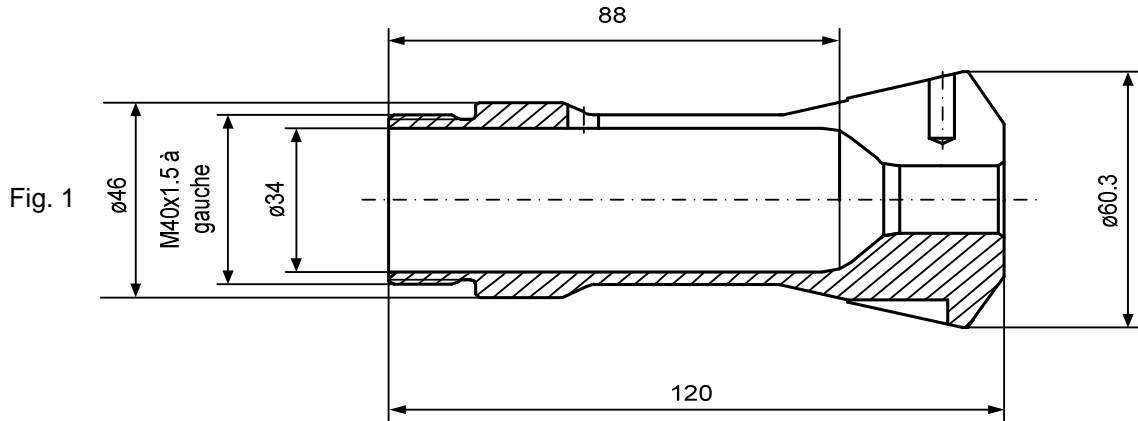
MULTIDECO 32/6c



MultiAlpha 6x32



Pinces
Spannzangen
Collets



Pince Spannzange Collet	Fig.	Type Typ Type	Article Artikel Article	Alésage max. Bohrung max. Bore max.			
Pince matière Werkstückspannzange Workholding collet	1	B46	72-2007		33	23	28
Pince d'avance Vorschubzange Feedfinger	2	A35	71-2019		26	18	23
Pince de reprise Abgreifzange Pick-up collet	3	PR35,5	78-2012		30	21	26

Alésages standards selon liste de prix - Standardbohrungen gemäss Preisliste - Standard bores according to pricelist
Autres alésages sur demande - Andere Bohrungen auf Anfrage - Other bores on request

Porte-pinces à changement rapide ECR
Spannzangenhalter für Schnellwechselsystem ECR
Collet chucks for quick change system ECR



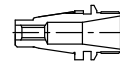
Le système à changement rapide est composé de 3 éléments : le corps de base, l'écrou à changement rapide et l'embout interchangeable.

Das Schnellwechsel-System besteht aus 3 Teilen : dem Grundkörper, der Schnellwechsellmutter und dem auswechselbaren Einsatz.

3 elements compose the quick change system : basic holder, quick change nut and interchangeable adapter.

Système à changement rapide ECR
Schnellwechselsystem ECR
Quick change system ECR

Embout porte-pinces
Spannzangeneinsatz
Collet chuck-adapter



Porte-outil de base Grundkörper Basic holder	Ecrou Mutter Nut	Clé Schüssel Spanner	Embout Einsatz Adapter	Pince Spannzange Collet	Ecrou Mutter Nut	Clé Schüssel Spanner
Broche	62-25200	61-25800	62-25346	EX 12 75-12200 ESX12 75-12300 ET1-12* ET1-12...	61-12730	-
Art. Tornos 241834			62-25337	EX 16 75-16200 ESX16 75-16300 ET1-16* ET1-16...	61-16710	-
Art. SCHAUBLIN 62-25020			62-25300	EX 20 75-20200 ESX20 75-20300 ET1-20* ET1-20...	61-20730	61-20800
Pour machine 32/6c Für Maschine 32/6c For machine 32/6c			62-25309	EX 25 75-25200 ESX25 75-25300 ET1-25* ET1-25...	61-25730	61-25800
Cylindrique Zylindrisch Cylindrical Ø 34/Ø 68 62-32036	62-32200	61-32800	62-32350	EX 16 75-16200 ESX16 75-16300 ET1-16* ET1-16...	61-16710	-
			62-32300	EX 25 75-25200 ESX25 75-25300 ET1-25* ET1-25...	61-25730	61-25800
			62-32312	EX 32 75-32200 ESX 32 75-32300 ET1-32* ET1-32...	61-32730	61-32800
			Embout porte-fraises Weldon Weldon Fräseinsatz Weldon endmill adapter			
			62-32328	Ø 6	62-32329	Ø 12
			62-32315	Ø 8	62-32318	Ø 16
			62-32316	Ø 10	62-32319	Ø 20


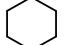

* Pince de taraudage PCM - PCM Gewindebohrzange - PCM tapping collet

Alésages standards selon liste de prix - Standardbohrungen gemäss Preisliste - Standard bores according to pricelist


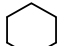

Autres alésages sur demande - Andere Bohrungen auf Anfrage - Other bores on request

Pince matière
Werkstückspannzange
Workholding collet


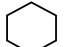


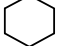
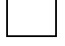


Pince - Spannzange - Collet		Alésage - Bohrung - Bore	
W25	80-01923		0.50...17.00
			3.00...14.00
			3.00...12.00
<i>Art. Tornos: AS 12607</i>			



Pince d'avance et pince d'avance maitresse
Vorschubzange und Vorschubzangenkörper
Feedfinger and master feedfinger

Pince - Spannzange - Collet		Alésage - Bohrung - Bore	
A22.8	71-01922		2.50...17.00
			3.00...14.00
			3.00...12.00
<i>Art. Tornos: AS 12611</i>			
A22.8	71-02011	Machoires*, acier ou bronze Spannbacken*, Stahl oder Bronze Jaws*, steel or brass <i>Art. Tornos : 091526</i>	
<i>Art. Tornos : A 138997</i>			

Pincés de contrebroche
Abgreifzange
Pick-up collet

Pince - Spannzange - Collet		Alésage - Bohrung - Bore	
F13	76-93019*		0.30...10.00
			1.00...9.00
			1.00...7.00
<i>Art. Tornos: AS 621211 Type A</i>			
F16	76-00830		0.30...13.00
			1.00...11.30
			1.00...9.20
<i>Art. Tornos: AS 621025 Type A</i>			

Pince et écrou pour broche AS 27/1 et AS 27/38 (taraudeur)
Spannzange und Mutter für Spindel AS 27/1 und AS 27/38 (Gewindebohrapparat)
Collet and nut for spindle AS 27/1 and AS 27/38 (tapping system)

Pince - Spannzange - Collet		Alésage - Bohrung - Bore		Ecrou - Mutter - Nut
EX 16	75-16200		0.50...10.00	61-16769
ESX 16	75-16300		1.00...3.00 (x 0.50) 4.00...10.00 (x 1.00)	<i>Art. Tornos : 213567</i>

* Article spécial, sur demande - nicht in Standardprogramm, auf Anfrage - special article, on request