

SA 16



SA 16 R



SB 16



SR 16 R



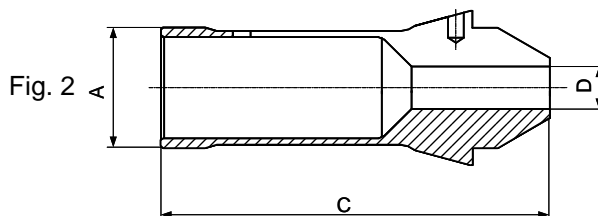
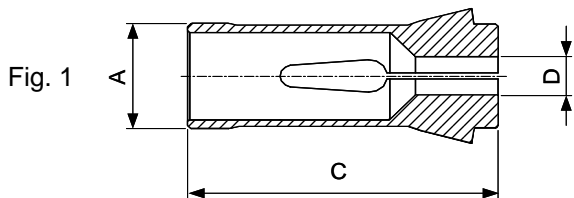
SI 12



SV12



Pinces matière
Werkstückspannzangen
Workholding collets



Pince Spannzange Collet		A	C	D	Fig.
F15	76-00580	15	64	0.30...12.70	1
	76-02022	15	71	0.30...11.11	2
F20	76-00087	20	67	0.50...17.00	1
	76-02017	20	75	0.50...16.00	2
	76-02027	20	80	0.50...9.00	2

Pince de dépannage Notfallspannzange Emergency collet	(avec tête prolongée) (mit verlängertem Kopf) (with longer head)	Type Typ Type	No. d'article Artikelnr. article nbr.	D	L
	corps trempé, tête tendre	F25	76-53004	27	18
	Schaft gehärtet, Kopf weich	F30	76-53005	32	20
	shank hardened, soft head				

Alésages standards selon liste de prix - Standardbohrungen gemäss Preisliste - Standard bores according to pricelist
Autres alésages sur demande - Andere Bohrungen auf Anfrage - Other bores on request

Pinces outils DIN 6499
Werkzeugspannzangen DIN 6499
Tool collets DIN 6499

Pince de taraudage
Gewindebohrzangen
Tapping collets

ESX



Fig. 1

Qualité standard
Standard Qualität
Standard quality

EX



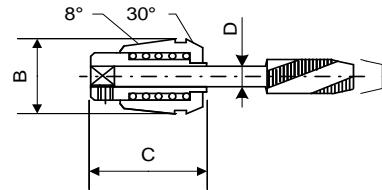
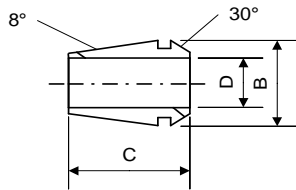
Fig. 2

Qualité UP
UP Qualität
UP quality

ET1-



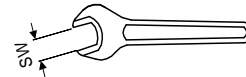
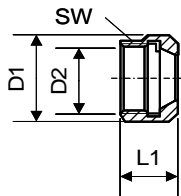
Fig. 3



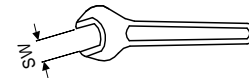
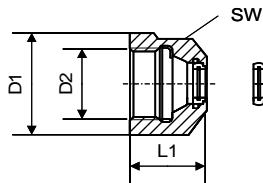
Pince Spannzange Collet		B	C	D	Fig.
ESX11 1)	75-11300	11.5	18	0.50...7.00	1
ESX16 2)	75-16300	17	27.5	1.00...10.00	1
EX16 2)	75-16200	16.7	27.5	0.30...10.00	2
ET1-16 2)	selon ø de queue gemäss Schaftdurchmesser according to ø of shank	17	27	1.00...6.30	3

Ecrous / Muttern / Nuts EX

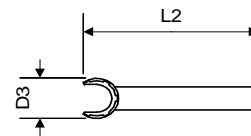
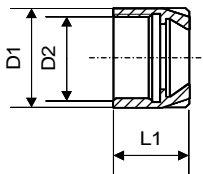
EXP



EXPA



EXM



gr. / type	Ecrrou Mutter Nut					Bague étanche Dichtscheibe Sealed disc	Clé Schlüssel Spanner		
	Art.	D1	D2	L1	SW	Art.	Art.	D3	L2
EXP16 2)	61-16710	25	M20x1	18	22	-	-	-	-
EXPA16	61-16795	25	M20x1	23.3	22	61-16791	-	-	-
EXM11 1)	61-11772	16	M13x0.75	12.1	-	-	61-11812	16.8	90

1) Pas pour - nicht für - not for : SI 12

2) Pas pour - nicht für - not for : SE 12

Alésages standards selon liste de prix - Standardbohrungen gemäss Preisliste - Standard bores according to pricelist
Autres alésages sur demande - Andere Bohrungen auf Anfrage - Other bores on request

SR 20 R & SR 20 R II



SV 20



ECAS 20



Pinces matière
Werkstückspannzangen
Workholding collets

Fig. 1

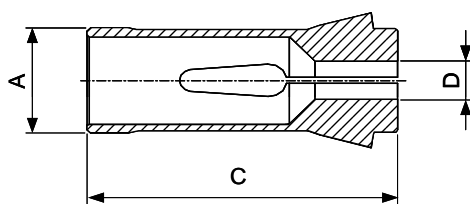
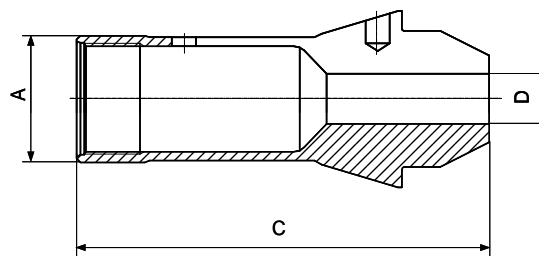


Fig. 2



Pince Spannzange Collet		A	C	D	Fig.
F25	76-00064	25	77	0.50...21.00	1
	76-02018	25	85	0.50...20.00	2

Pince de dépannage Notfallspannzange Emergency collet	(avec tête prolongée) (mit verlängertem Kopf) (with longer head)	Type Typ Type	No. d'article Artikelnr. article nbr.	D	L
	corps trempé, tête tendre	F25	76-53004	27	18
	Schaft gehärtet, Kopf weich				
	shank hardened, soft head				

Alésages standards selon liste de prix - Standardbohrungen gemäss Preisliste - Standard bores according to pricelist
Autres alésages sur demande - Andere Bohrungen auf Anfrage - Other bores on request

Pinces outils DIN 6499
Werkzeugspannzangen DIN 6499
Tool collets DIN 6499

Pince de taraudage
Gewindebohrzangen
Tapping collets

ESX



Fig. 1

Qualité standard
Standard Qualität
Standard quality

EX



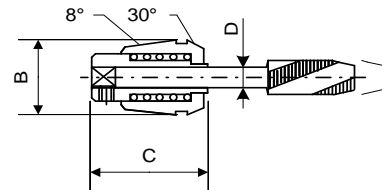
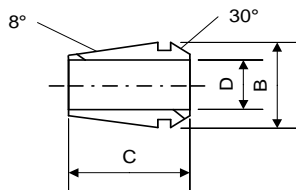
Fig. 2

Qualité UP
UP Qualität
UP quality

ET1-



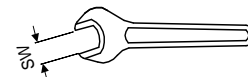
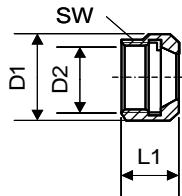
Fig. 3



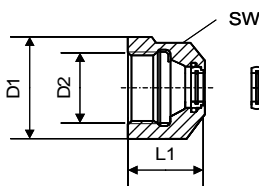
Pince Spannzange Collet		B	C	D	Fig.
ESX11	75-11300	11.5	18	0.50...7.00	1
ESX16	75-16300	17	27.5	1.00...10.00	1
EX16	75-16200	16.7	27.5	0.30...10.00	2
ET1-16	selon ø de queue gemäss Schaftdurchmesser according to ø of shank	17	27	1.00...6.30	3

Ecrous / Muttern / Nuts EX

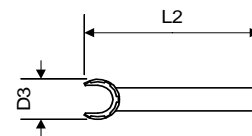
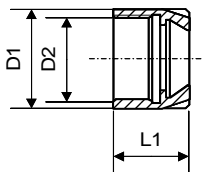
EXP



EXPA



EXM



gr. / type	Ecrout Mutter Nut					Bague étanche Dichtscheibe Sealed disc		Clé Schlüssel Spanner	
	Art.	D1	D2	L1	SW	Art.	Art.	D3	L2
EXP16	61-16710	25	M20x1	18	22	-	-	-	-
EXPA16	61-16795	25	M20x1	23.3	22	61-16791	-	-	-
EXM11	61-11772	16	M13x0.75	12.1	-	-	61-11812	16.8	90

Alésages standards selon liste de prix - Standardbohrungen gemäss Preisliste - Standard bores according to pricelist
Autres alésages sur demande - Andere Bohrungen auf Anfrage - Other bores on request

SV 32



SV 32 J & SV 32 J II



ECAS 32



Pinces matière
Werkstückspannzangen
Workholding collets

Fig. 1

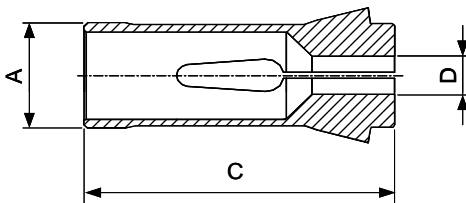
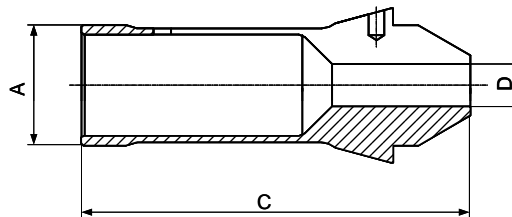


Fig. 2



Pince Spannzange Collet		A	C	D	Fig.
F37	76-00740	37	92	1.00...32.00	1
	76-02020	37	107	1.00...32.00	2

Pince de dépannage Notfallspannzange Emergency collet	(avec tête prolongée) (mit verlängertem Kopf) (with longer head)	Type Typ Type	No. d'article Artikelnr. article nbr.	D	L
	corps trempé, tête tendre	F37	76-53006	40	20
	Schaft gehärtet, Kopf weich				
	shank hardened, soft head				

Alésages standards selon liste de prix - Standardbohrungen gemäss Preisliste - Standard bores according to pricelist
Autres alésages sur demande - Andere Bohrungen auf Anfrage - Other bores on request

Pinces outils DIN 6499
Werkzeugspannzangen DIN 6499
Tool collets DIN 6499

Pince de taraudage
Gewindebohrzangen
Tapping collets

ESX



Fig. 1

Qualité standard
Standard Qualität
Standard quality

EX



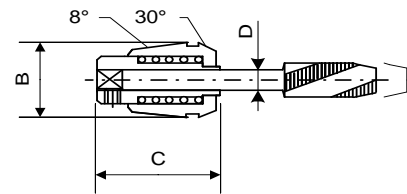
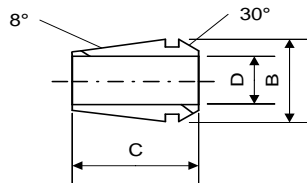
Fig. 2

Qualité UP
UP Qualität
UP quality

ET1-

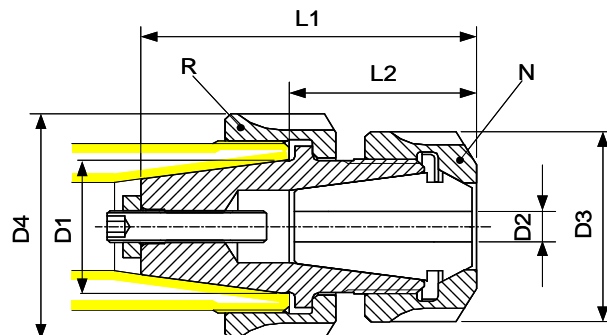


Fig. 3



Pince Spannzange Collet		B	C	D	Fig.
ESX11	75-11300	11.5	18	0.50...7.00	1
ESX16	75-16300	17	27.5	1.00...10.00	1
EX16	75-16200	16.7	27.5	0.30...10.00	2
ET1-16	selon \varnothing de queue gemäss Schaftdurchmesser according to \varnothing of shank	17	27	1.00...6.30	3
ESX20	75-20300	21	31.5	1.00...13.00	1
EX20	75-20200	20.7	31.5	1.00...13.00	2
ET1-20	selon \varnothing de queue gemäss Schaftdurchmesser according to \varnothing of shank	21	31	2.20...7.00	3

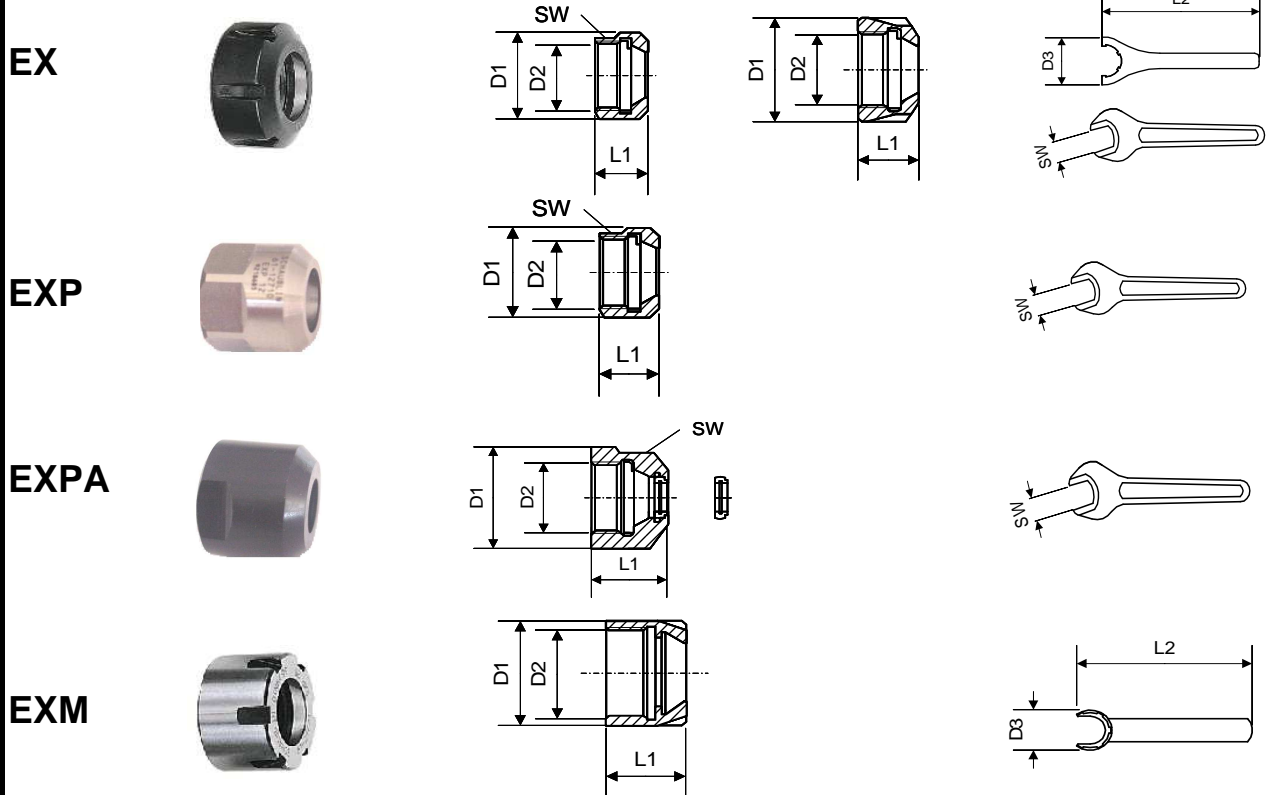
Douille de réduction E / E
Reduktionshülsen E / E
Reduction sleeves E / E



D1	Art.	L1	L2	D2	D3	D4	M	N	R
E 20	61-12601	51	27.5	0.5-7	19	35	75-12200 75-12300 ET1-12...	61-12730	61-20691 (M24x1) 61-20690 (M25x1.5)
	61-16611	56.6	33.1	0.5-10	22	35	75-16200 75-16300 ET1-16...	61-16772	61-20691 (M24x1) 61-20690 (M25x1.5)

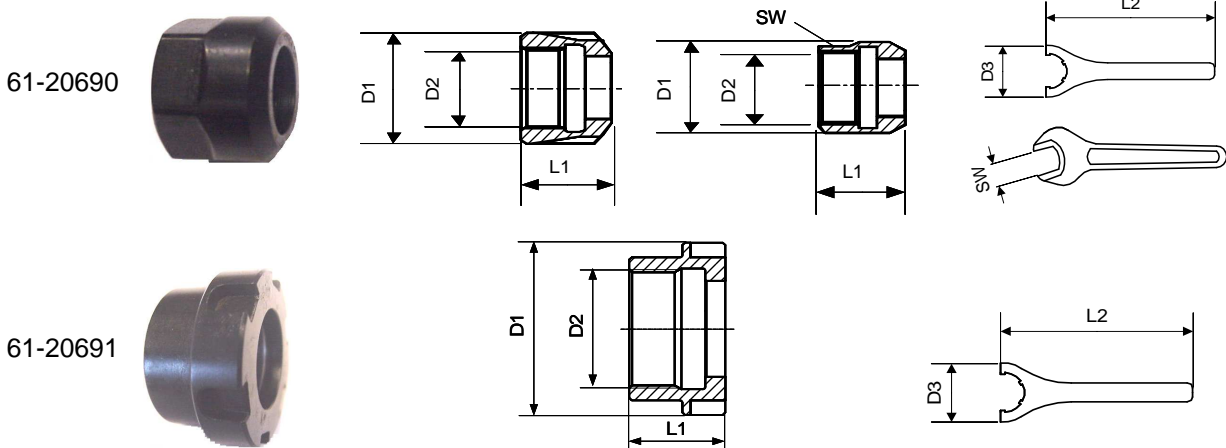
Alésages standards selon liste de prix - Standardbohrungen gemäss Preisliste - Standard bores according to pricelist
Autres alésages sur demande - Andere Bohrungen auf Anfrage - Other bores on request

Ecrous / Muttern / Nuts EX



gr. / type	Ecrout Mutter Nut					Bague étanche Dichtscheibe Sealed disc	Clé Schlüssel Spanner		
	Art.	D1	D2	L1	SW	Art.	Art.	D3	L2
EX 12	61-12730	19	M14x0.75	14	17	-	-	-	-
EXP 16	61-16710	25	M20x1	18	22	-	-	-	-
EXP 20	61-20710	30.5	M24x1	18.5	27	-	-	-	-
EXPA 16	61-16795	25	M20x1	23.3	22	61-16791	-	-	-
EXPA 20	61-20795	30.5	M24x1	24	27	61-20791	-	-	-
EXM 11	61-11772	16	M13x0.75	12.1	-	-	61-11812	16.8	90

Ecrous de blocage / Spannmuttern / Tighten nuts



gr. / type Gr. / Typ size/type	écrou Mutter nut					clé Schlüssel spanner		
	Art.	D1	D2	L1	SW	Art.	D3	L2
E 20	61-20690	35	M25x1.5	18	-	61-20800	60	183
E 20	61-20691	35	M24x1	18	-	61-20800	60	183