

Machine transfert rotative HB 32/16
Pincas HB32
Table à 16 positions

Rundtaktautomat HB32/16
Spannzangenaufnahme HB32
16-teiliger Rundschalttisch

Rotary indexing table machine HB32/16
Collets HB32
Rotary indexing table with 16 divisions



Fig. 1

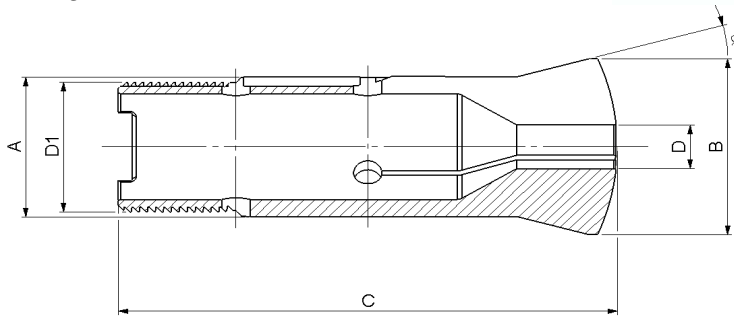


Fig. 2

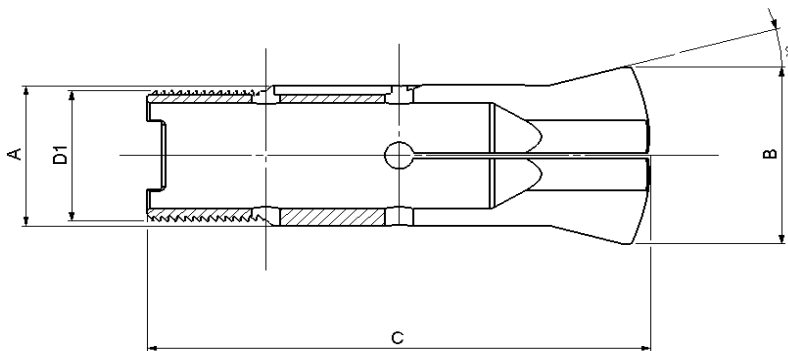
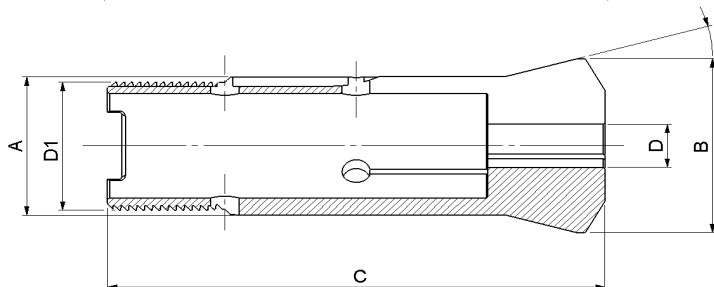
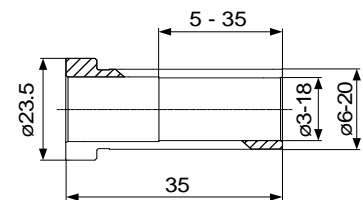
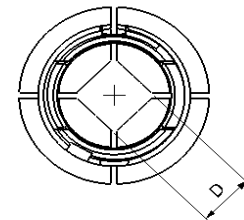
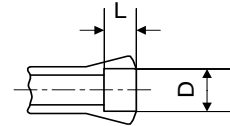


Fig. 3



Alésage à cran
Stufenbohrung
Step bore



Pince pour douilles / Spannange für Hülsen / Collet for sleeves

Douille / Hülse / Sleeve 85-53310

Type	Art.	A	B	C	D1	α	Fig.	L	D min.-max
HB 32	72-02010	32	40	106	$\varnothing 29.7 \times 1.693 \nabla 45^\circ$	15°	3	-	6.00...20.00
							1	-	3.00...23.79
								44	23.80...27.99
								12	28.00...29.99
	72-02030	32	40	106	$\varnothing 29.7 \times 1.693 \nabla 45^\circ$	15°	1	-	30.00...32.00
								44	3.00...20.59
								12	20.60...23.99
								8	24.00...25.49
	72-02040	32	40	106	$\varnothing 29.7 \times 1.693 \nabla 45^\circ$	15°	2	-	25.50...27.00
								44	3.00...16.99
								12	17.00...19.79
								8	19.80...20.99
								21.00...22.60	

Alésages standards selon liste de prix - Standardbohrungen gemäss Preisliste - Standard bores according to pricelist
Autres alésages sur demande - Andere Bohrungen auf Anfrage - Other bores on request

Machine transfert rotative HB 32-45/16
Pincas HB32-45
Table à 16 positions

Rundtaktautomat HB32-45/16
Spannzangenaufnahme HB32-45
16-teiliger Rundschalttisch

Rotary indexing table machine HB32-45/16
Collets HB32-45
Rotary indexing table with 16 divisions



Fig. 1

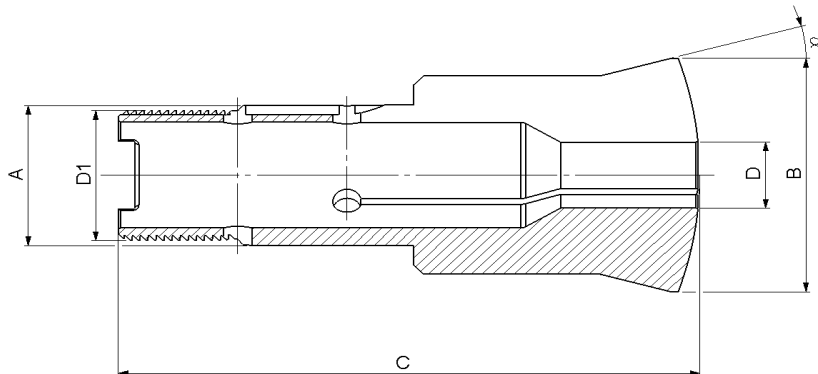
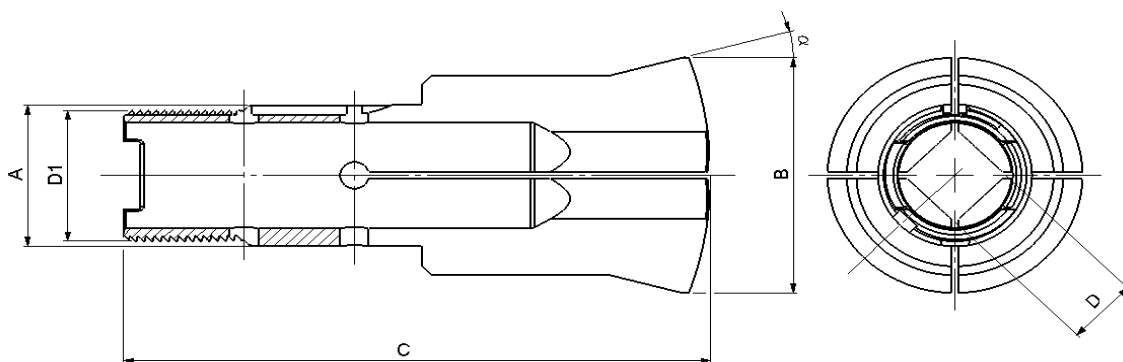
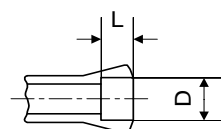


Fig. 2



Alésage à cran
Stufenbohrung
Step bore



Type	Art.	A	B	C	D1	α	Fig.	L	D min.-max
HB 32/45	72-02033	32	53	122	$\varnothing 29.7 \times 1.693$	$\sphericalangle 45/5^\circ$	1	-	3.00...23.79
								50	23.80...40.99
								14	41.00...41.99
								12	42.00...42.99
								10	43.00...43.99
								8	44.00...45.00
	72-02043	32	53	122	$\varnothing 29.7 \times 1.693$	$\sphericalangle 45/5^\circ$	1	-	3.00...20.59
								50	20.60...34.99
								14	35.00...35.99
								12	36.00...36.99
72-02043	32	53	122	$\varnothing 29.7 \times 1.693$	$\sphericalangle 45/5^\circ$	2	-	3.00...16.79	
							50	16.80...28.99	
							12	29.00...29.99	
							10	30.00...30.99	
							8	31.00...31.75	

Alésages standards selon liste de prix - Standardbohrungen gemäss Preisliste - Standard bores according to pricelist
Autres alésages sur demande - Andere Bohrungen auf Anfrage - Other bores on request

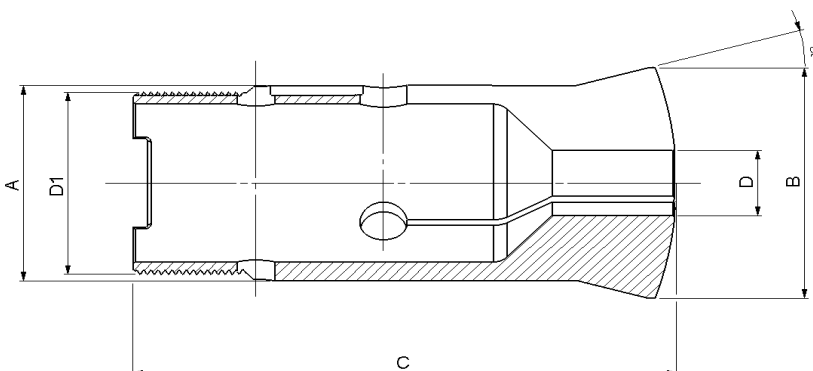
Machine transfert rotative HB 45/12
Pincas HB45
Table à 12 positions

Rundtaktautomat HB45/12
Spannzangenaufnahme HB45
12-teiliger Rundschalttisch

Rotary indexing table machine HB45/12
Collets HB45/12
Rotary indexing table with 12 divisions



Fig. 1



Alésage à cran
Stufenbohrung
Step bore

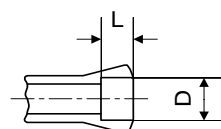
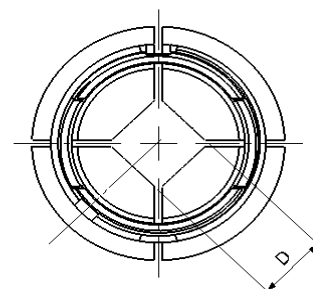
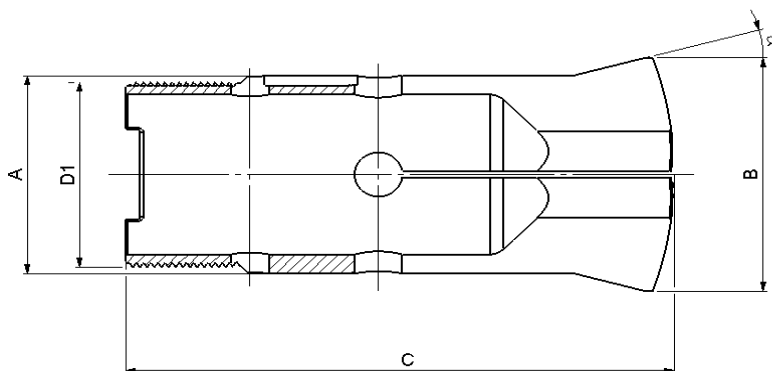


Fig. 2



Type	Art.	A	B	C	D1	α	Fig.	L	D min.-max
HB 45	72-02036	45	53	115	M42 x 1.5	15°	1	-	3.00...36.00
								53	36.01...40.99
								14	41.00...41.99
								12	42.00...42.99
								10	43.00...43.99
								8	44.00...45.00
	72-02046	45	53	115	M42 x 1.5	15°	1	-	3.00...31.00
								53	31.01...34.99
								14	35.00...35.99
								12	36.00...36.99
								10	37.00...37.99
								8	38.00...38.50
72-02046	45	53	115	M42 x 1.5	15°	2	-	3.00...25.40	
							53	25.41...28.99	
							12	29.00...29.99	
							10	30.00...30.99	
							8	31.00...31.75	

Alésages standards selon liste de prix - Standardbohrungen gemäss Preisliste - Standard bores according to pricelist
Autres alésages sur demande - Andere Bohrungen auf Anfrage - Other bores on request

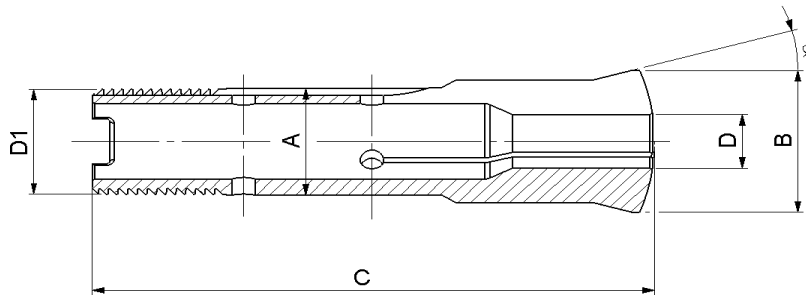
Machine transfert rotative HW 20/10
Pincas HW20 / HW25
Table à 10 positions

Rundtaktautomat HW20/10
Spannzangenaufnahme HW20 / HW25
10-teiliger Rundschtittisch

Rotary indexing table machine HW20/10
Collets HW20 / HW25
Rotary indexing table with 10 divisions



Fig.1



Alésage à cran
Stufenbohrung
Step bore

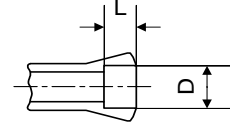
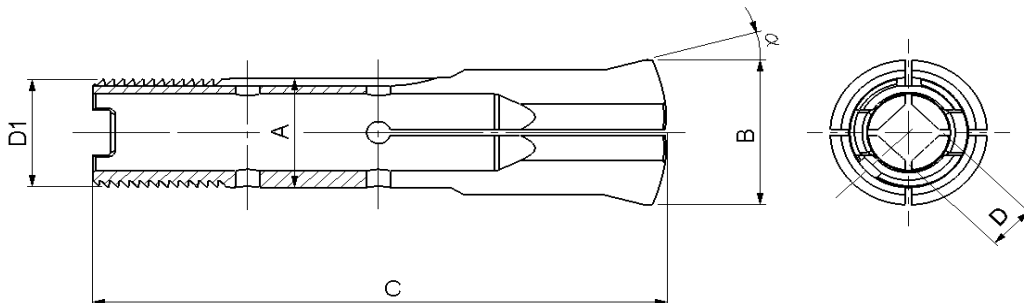
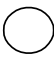
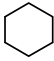



Fig.2



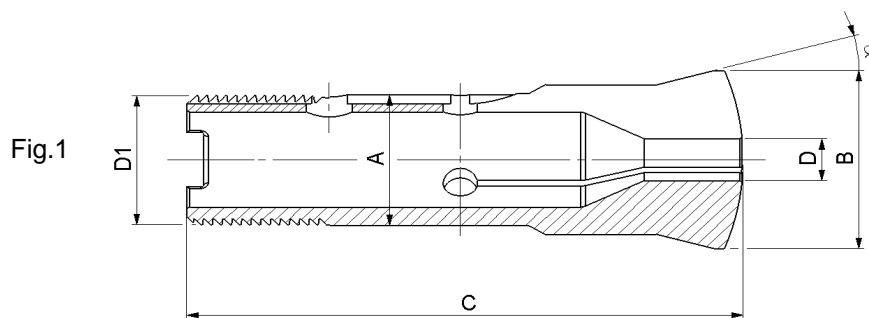
Type	Art.	A	B	C	D1	α	Fig.	L	D min.-max.
HW 20	80-02030	20	26.3	96.5	$\varnothing 19.7 \times 1.666 \angle 45^\circ$	15°	1	-	 0.30...13.79
							31	-	13.80...20.00
	80-02040	20	26.3	96.5	$\varnothing 19.7 \times 1.666 \angle 45^\circ$	15°	1	-	 1.00...11.79
							31	-	11.80...17.00
							2	-	 1.00...9.79
							31	-	9.80...14.00

Alésages standards selon liste de prix - Standardbohrungen gemäss Preisliste - Standard bores according to pricelist
Autres alésages sur demande - Andere Bohrungen auf Anfrage - Other bores on request

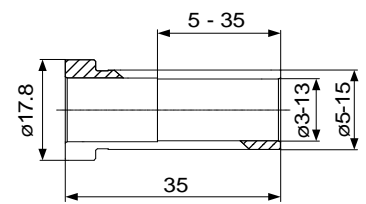
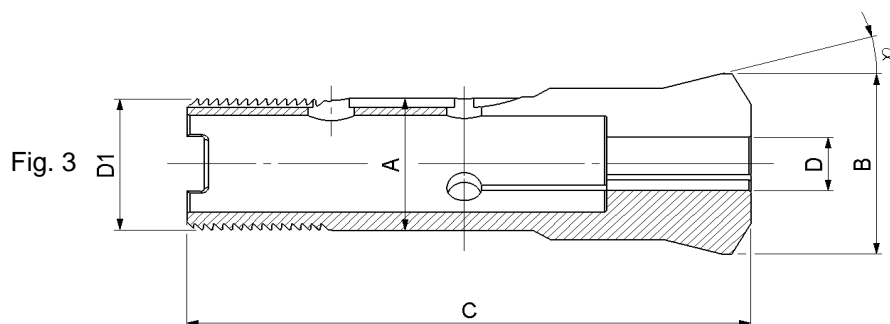
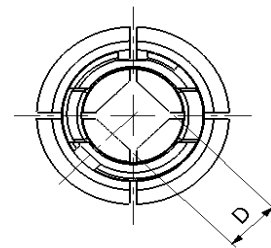
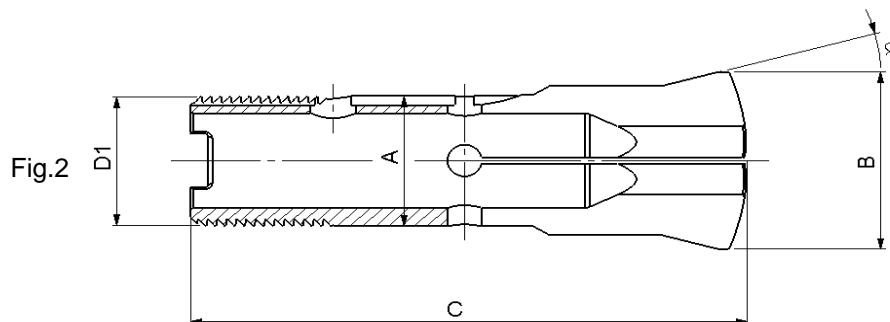
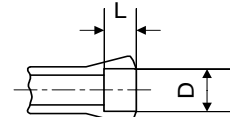
Machine transfert rotative HW 25/12
Pincas HW25
Table à 12 positions

Rundtaktautomat HW25/12
Spannzangenaufnahme HW25
12-teiliger Rundschalttisch

Rotary indexing table machine HW25/12
Collets HW25
Rotary indexing table with 12 divisions



Alésage à cran
Stufenbohrung
Step bore



Pince pour douilles / Spannzange für Hülsen / Collet for sleeves

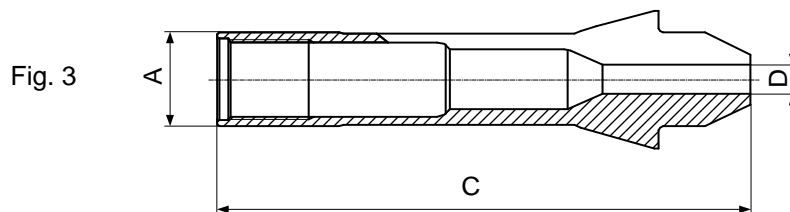
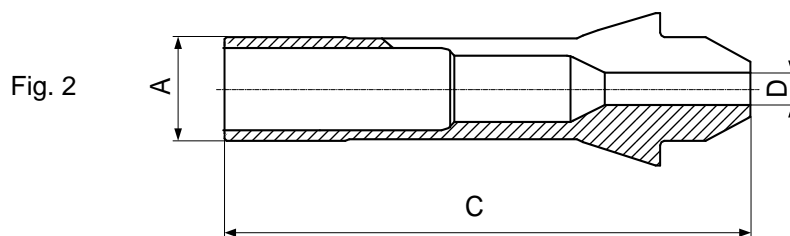
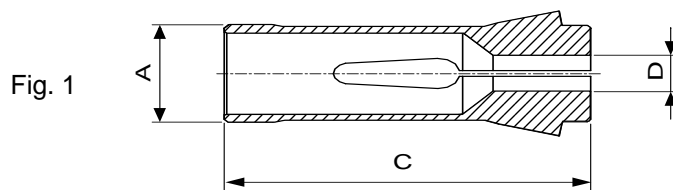
Douille / Hülse / Sleeve 85-53300

Type	Art.	A	B	C	D1	α	Fig.	L	D min.-max.
HW 25	80-02010	25	33.7	97.6	$\varnothing 24.7 \times 1.693$ $\sphericalangle 45^\circ$	15°	3	-	5.00...15.00
	80-02033						1	-	0.30...17.79
								31	-
								1	-
							31	-	15.30...22.00
80-02043							2	-	3.00...12.59
							31	-	12.60...19.05

Alésages standards selon liste de prix - Standardbohrungen gemäss Preisliste - Standard bores according to pricelist
Autres alésages sur demande - Andere Bohrungen auf Anfrage - Other bores on request



Pinces matière
Werkstückspannzangen
Workholding collets



Pince Spannzange Collet		A	C	D	Fig.
F8	76-00577	8	42	0.30...6.35	1
	SPECIAL	8	45	0.30...5.00	2
F10	76-00086	10	47.5	0.30...8.00	1
	76-02021	10	52	0.30...7.00	3

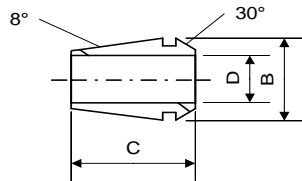
Alésages standards selon liste de prix - Standardbohrungen gemäss Preisliste - Standard bores according to pricelist
Autres alésages sur demande - Andere Bohrungen auf Anfrage - Other bores on request

Pinces outils DIN 6499
Werkzeugspannzangen DIN 6499
Tool collets DIN 6499

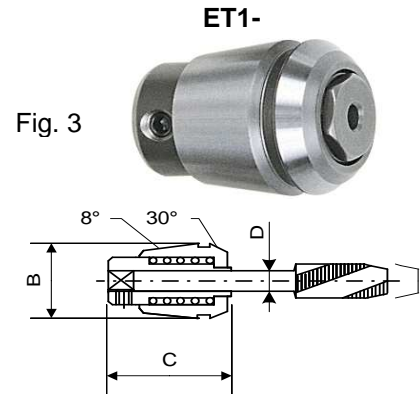
Pince de taraudage
Gewindebohrzangen
Tapping collets



Qualité standard
Standard Qualität
Standard quality



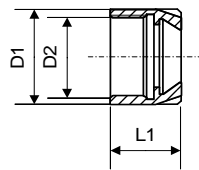
Qualité UP
UP Qualität
UP quality



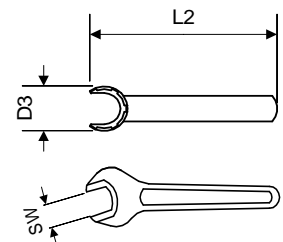
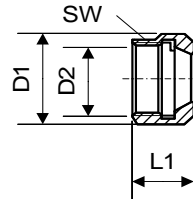
Pince Spannzange Collet		B	C	D	Fig.
ESX8	75-08300	8.5	13.5	1.00...4.50	1
ESX11	75-11300	11.7	18	1.00...7.00	1
ESX12	75-12300	12	19.5	1.00...7.00	1
EX12	75-12200	11.75	17.5	1.00...7.00	2
ET-1-12	selon \varnothing de queue gemäss Schaftdurchmesser according to \varnothing of shank	12	21.5	1.00...3.55	3

écrous DIN6499 - Muttern DIN6499 - nuts DIN6499

EXM

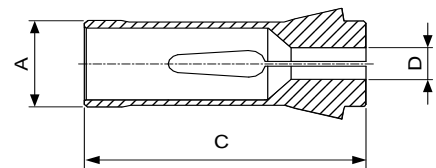


EXP



gr. / type Gr. / Typ size/type	écrou Mutter nut					clé Schlüssel spanner		
	Art.	D1	D2	L1	SW	Art.	D3	L2
EXM 11	61-11772	16	M13x0.75	12.1	-	61-11812	16.8	90
EXP 12	61-12710	16.7	M13x0.75	14	15	-	-	-

Pinces outils F
Werkzeugspannzangen F
Tool collets T



Pince Spannzange Collet		A	C	D
F4.5	76-00076 76-93130	4.5	17.25	0.30...3.57 4.00

Alésages standards selon liste de prix - Standardbohrungen gemäss Preisliste - Standard bores according to pricelist
Autres alésages sur demande - Andere Bohrungen auf Anfrage - Other bores on request



Pinces matière
Werkstückspannzangen
Workholding collets

Fig. 1

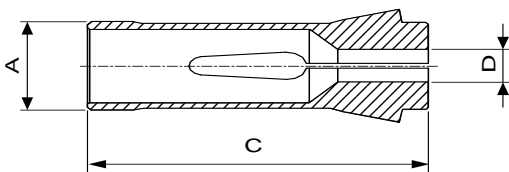
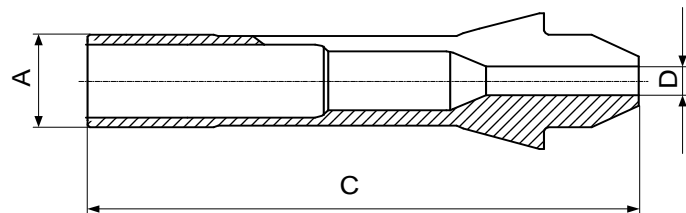
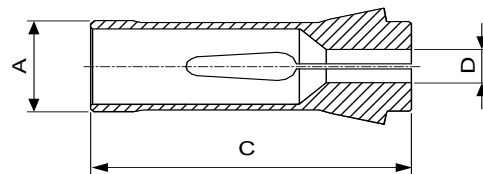


Fig. 2



Pince Spannzange Collet		A	C	D	Fig.
F15	76-00580	10	47.5	0.30...8.00	1
	76-02022	10	52	0.30...7.00	2

Pinces outils F
Werkzeugspannzangen F
Tool collets T



Pince Spannzange Collet		A	C	D
F4.5	76-00076	4.5	17.25	0.30...3.57
	76-93130			4.00

Alésages standards selon liste de prix - Standardbohrungen gemäss Preisliste - Standard bores according to pricelist
Autres alésages sur demande - Andere Bohrungen auf Anfrage - Other bores on request

Pinces outils DIN 6499
Werkzeugspannzangen DIN 6499
Tool collets DIN 6499

Pince de taraudage
Gewindebohrzangen
Tapping collets



Qualité standard
Standard Quality
Standard quality

ESX

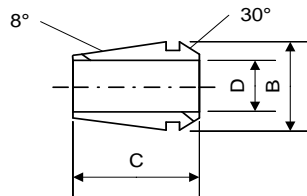


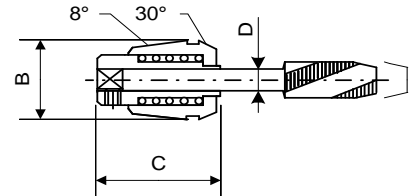
Fig. 2



Qualité UP
UP Qualität
UP quality

EX

Fig. 3

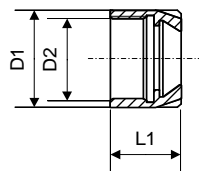


ET1-

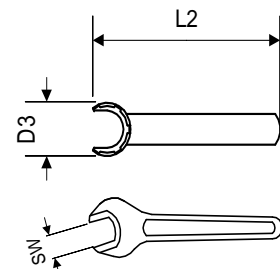
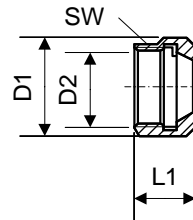
Pince Spannzange Collet		B	C	D	Fig.
ESX8	75-08300	8.5	13.5	1.00...4.50	1
ESX11	75-11300	11.7	18	1.00...7.00	1
ESX12	75-12300	12	19.5	1.00...7.00	1
EX12	75-12200	11.75	17.5	1.00...7.00	2
ET-1-12	selon \varnothing de queue gemäss Schaftdurchmesser according to \varnothing of shank	12	21.5	1.00...3.55	3
ESX16	75-16300	17	27.5	1.00...10.00	1
EX16	75-16200	16.7	27.5	0.50...10.00	2
ET1-16	selon \varnothing de queue gemäss Schaftdurchmesser according to \varnothing of shank	17	27	1.00...6.30	3

écrous DIN6499 - Muttern DIN6499 - nuts DIN6499

EXM



EXP



gr. / type Gr. / Typ size/type	écrou Mutter nut					clé Schlüssel spanner		
	Art.	D1	D2	L1	SW	Art.	D3	L2
EXM 11	61-11772	16	M13x0.75	12.1	-	61-11812	16.8	90
EXM 16	61-16772	22	M19x1	18	-	61-16812	22.5	110
EXP 12	61-12710	16.7	M13x0.75	14	15	-	-	-
EXP 16	61-16710	25	M20x1	18	22	-	-	-

Alésages standards selon liste de prix - Standardbohrungen gemäss Preisliste - Standard bores according to pricelist
Autres alésages sur demande - Andere Bohrungen auf Anfrage - Other bores on request