

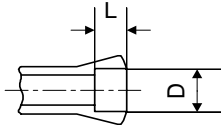
**EWAMATIC  
LINE**



**RS 15**



Fig. A



Alésage à cran - Stufenbohrung - Step bore

Fig. 1

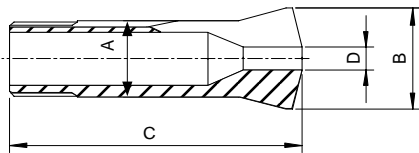


Fig. 2

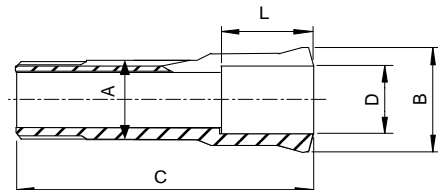


Fig. 3

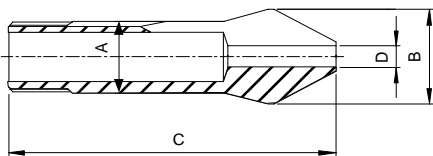


Fig. 4

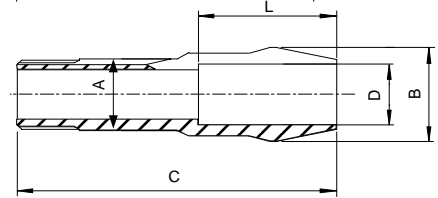


Fig. 5

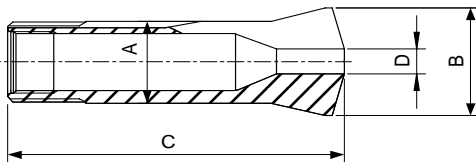
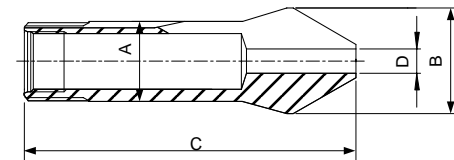


Fig. 6



Alésage Bohrung Bore	D	L	Pince Spannzange Collet	Art.	A	B	C	Fig.
○	0.30...14.50	-	W 20	<b>80-00004</b>	20	26.3	73	1
	14.51...16.00	28						1A
	16.01...20.00	24	W 20	<b>80-00107</b>			2	
	0.30...13.00	-	W 20	<b>80-92744</b>	20	26.3	84.5	3
13.01...16.00	41			3A				
	16.01...20.00	37	W 20	<b>80-93286</b>			4	
○	0.30...19.05	-	W 25	<b>80-00005</b>	25	33.7	97.6	1
	19.06...21.00	35						1A
	21.01...25.40	30	W 25	<b>80-00700</b>			2	
	0.30...19.05	-	W 25	<b>80-92872</b>	25	33.7	112.2	3
19.06...21.00	50			3A				
	21.01...25.40	47	W 25	<b>80-02006</b>			4	
○	0.50...25.19	-	W 31.75	<b>80-00842</b>	31.75	37.4	87	5
	25.20...27.99	40						5A
	0.30...25.19	-	W 31.75	<b>80-02007</b>	31.75	37.4	108.7	6
	25.20...28.00	64					6A	

Alésages standards selon liste de prix - Standardbohrungen gemäss Preisliste - Standard bores according to pricelist  
 Autres alésages sur demande - Andere Bohrungen auf Anfrage - Other bores on request  
 Alésages aussi disponibles en UP - Bohrungen auch in UP Ausführung verfügbar - Bores also available in UP version

CNC-Werkzeug-Schleifzentrum  
7 Achsen

Centre d'affûtage CNC  
7 axes

CNC tool grinding center  
7 axes



Pince BCR 32  
Spannzange BCR 32  
Collet BCR 32



Concentricité UP  
Rundlaufqualität UP  
Concentricity UP

Fig. 1

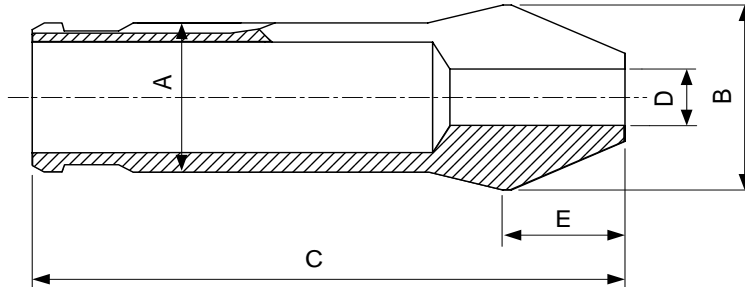
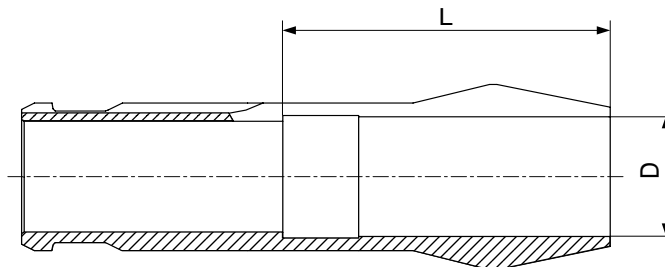


Fig. 2



Type	Art.	A	B	C	E	L	D min. - max. $\bigcirc$	Fig.
BCR 32	72-93235	32	40	117	24	-	0.30...24.00	1
						64	24.01...28.00	2

Alésages standards selon liste de prix - Standardbohrungen gemäss Preisliste - Standard bores according to pricelist  
Autres alésages sur demande - Andere Bohrungen auf Anfrage - Other bores on request

**Douilles de réduction pour cônes Morse**  
**Reduktionshülsen für Morsekonen**  
**Reduction sleeves for Morse-tapers**

Fig. 1

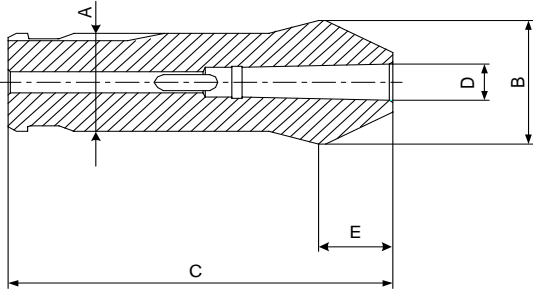
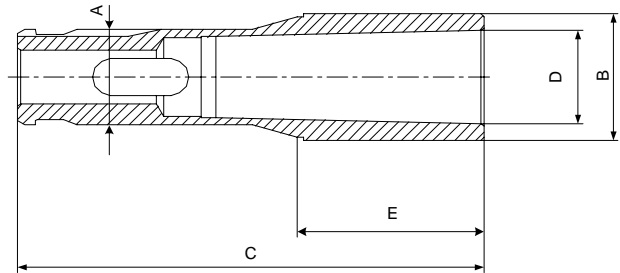


Fig. 2



Type	Art.	A	B	C	E	D	Fig.
BCR32/MK1	<b>68-04062</b>	32	40	115	22	12.065	1
BCR32/MK2	<b>68-04063</b>	32	40	115	22	17.78	1
BCR32/MK3	<b>68-04064</b>	32	40	128	35	23.825	1
BCR32/MK4	<b>68-04071</b>	32	42	155	62	31.267	2

**Tasseau porte-fraises**  
**Fräserhalter**  
**Millholder arbor**

Fig. 1

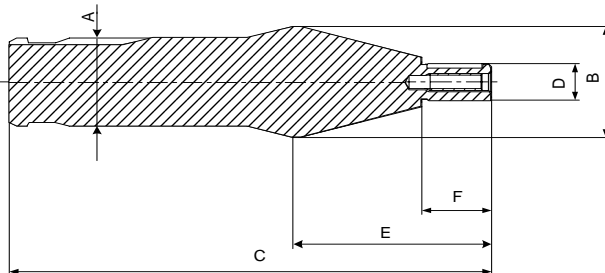
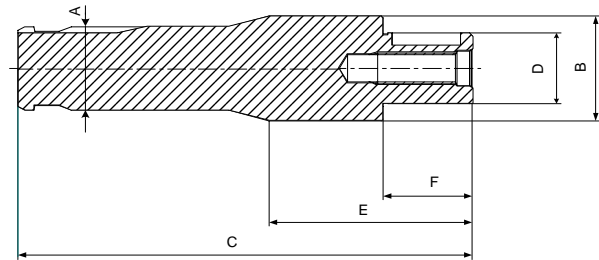


Fig. 2



Type	Art.	A	B	C	E	F	D	Fig.
BCR32	<b>89-03246</b>	32	40	158	65	23	13	1
	<b>89-03247</b>	32	40	162	69	27	16	1
	<b>89-03248</b>	32	40	166	73	31	22	1
	<b>89-03249</b>	32	40	168	75	33	27	2
	<b>89-03250</b>	32	42	173	80	38	32	2
	<b>89-03282</b>	32	52	175	82	40	40	2

sur demande - auf Anfrage - on request



Fig. 1

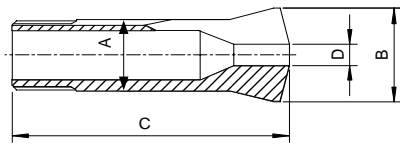


Fig. 4

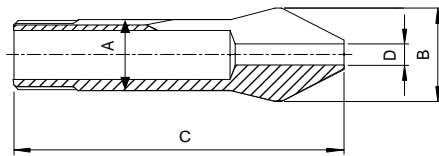


Fig. 2

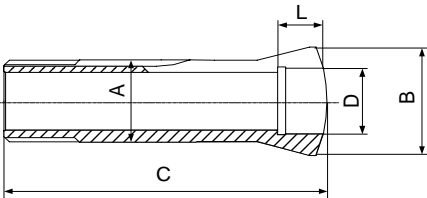


Fig. 5

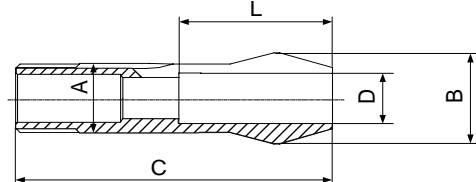


Fig. 3

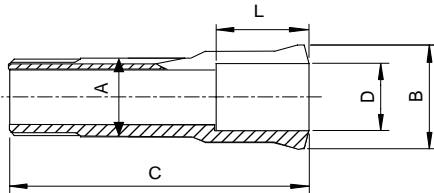
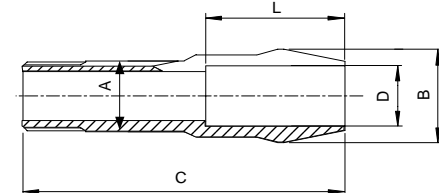


Fig. 6



Alésage Bohrung Bore	D	L	Pince Spannzange Collet	Art.	A	B	C	Fig.	
○	0.30...14.50	-	W 20	<b>80-00004</b>	20	26.3	73	1	
	14.51...16.00	28		<b>80-00107</b>				2	
	16.01...20.00	24	W 20	<b>80-00107</b>				3	
	○	0.30...13.00	-	W 20	<b>80-92744</b>	20	26.3	84.5	4
		13.01...16.00	41		<b>80-93286</b>				5
		16.01...20.00	37	W 20	<b>80-93286</b>				6
○		0.30...19.05	-	W 25	<b>80-00005</b>	25	33.7	97.6	1
		19.06...21.00	35		<b>80-00700</b>				2
		21.01...25.40	30	W 25	<b>80-00700</b>				3
	○	0.30...19.05	-	W 25	<b>80-92872</b>	25	33.7	112.2	4
		19.06...21.00	50		<b>80-02006</b>				5
		21.01...25.40	47	W 25	<b>80-02006</b>				6

**Butée de profondeur pour pinces W**  
**Tiefenansschläge für Spannzangen W**  
**Adjustable depth stops for collets W**

68-99107 W20  
68-99110 W25



Alésages standards selon liste de prix - Standardbohrungen gemäss Preisliste - Standard bores according to pricelist  
Autres alésages sur demande - Andere Bohrungen auf Anfrage - Other bores on request  
Alésages aussi disponibles en UP - Bohrungen auch in UP Ausführung verfügbar - Bores also available in UP version