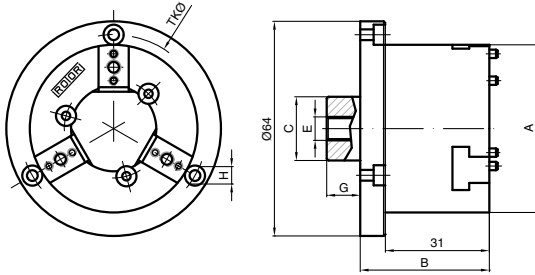


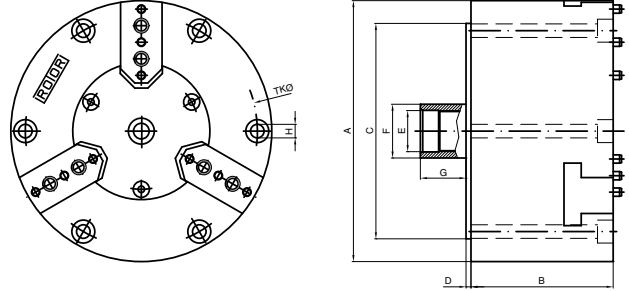
Futter für rotierenden Einsatz

Rotating Chucks

Mandrins tournants



Präzisions-Spannfutter Ø 50 mm



Präzisions-Spannfutter Ø 80 / 100 / 115 / 150 / 200 mm

| Ø A mm | Backen jaws jeux | Best. Nr. Order No. no. de com. | Backenhub im Ø Stroke on diameter Course des mors au Ø mm | Abmessungen Dimensions dimensions | | | | | | | | n max RPM max n max min-1 | Spannkraft Gripping force force de serrage daN |
|-----------|------------------------|---------------------------------------|--|---|-------|---|--------------|------|----|--------|---------|------------------------------------|---|
| | | | | B | C | D | E | F | G | TK Ø | H | | |
| 50 | 2 | 50/2 - 200 | 2.0 | 39 | 19 | | M7 x 0.75 | 19 | 10 | 56 | 3 x M3 | 9600 | 1100 |
| | 3 | 50/3 - 200 | 2.0 | 39 | 19 | | M7 x 0.75 | 19 | 10 | 56 | 3 x M3 | 9600 | 756 |
| 80 | 2 | 80/2B - 250 | 2.5 | 54 | 60 | 2 | 5/8" - 32 UN | 20.6 | 18 | 70 | 4 x M5 | 6000 | 180 |
| | 2 | 80/2BC - 250 | 2.5 | 54 | 60 | 2 | 5/8" - 32 UN | 20.6 | 18 | 70 | 4 x M5 | 6000 | 210 |
| | 3 | 80/3B - 070 | 0.7 | 54 | 60 | 2 | 5/8" - 32 UN | 20.6 | 18 | 70 | 3 x M5 | 6000 | 120 |
| | 3 | 80/3BC - 070 | 0.7 | 54 | 60 | 2 | 5/8" - 32 UN | 20.6 | 18 | 70 | 3 x M5 | 6000 | 140 |
| | 3 | 80/3B - 250 | 2.5 | 54 | 60 | 2 | 5/8" - 32 UN | 20.6 | 18 | 70 | 3 x M5 | 6000 | 120 |
| | 3 | 80/3BC - 250 | 2.5 | 54 | 60 | 2 | 5/8" - 32 UN | 20.6 | 18 | 70 | 3 x M5 | 6000 | 140 |
| 100 | 2 | 100/2B - 250 | 2.5 | 55 | 82.55 | 2 | 5/8" - 32 UN | 20.6 | 18 | 88.9 | 6 x M5 | 5500 | 315 |
| | 2 | 100/2BC - 250 | 2.5 | 55 | 82.55 | 2 | 5/8" - 32 UN | 20.6 | 18 | 88.9 | 6 x M5 | 5500 | 330 |
| | 3 | 100/3B - 250 | 2.5 | 55 | 82.55 | 2 | 5/8" - 32 UN | 20.6 | 18 | 88.9 | 6 x M5 | 5500 | 210 |
| | 3 | 100/3BC - 250 | 2.5 | 55 | 82.55 | 2 | 5/8" - 32 UN | 20.6 | 18 | 88.9 | 6 x M5 | 5500 | 220 |
| | 3 | 100/3B - 500 | 5.0 | | | | | | | | | | |
| | 3 | 100/3BC - 500 | 5.0 | | | | | | | | | | |
| | 3 | 100/3B - 600 | 6.0 | | | | | | | | | | |
| | 3 | 100/3BC - 600 | 6.0 | | | | | | | | | | |
| | 3 | 100/3B - 900 | 9.0 | | | | | | | | | | |
| 115 | 3 | 115/3B - 300 | 3.0 | 56 | 93.5 | 2 | 5/8" - 32 UN | 20 | 17 | 104 | 6 x M5 | 6500 | 320 |
| | 3 | 115/3BC - 300 | 3.0 | 56 | 93.5 | 2 | 5/8" - 32 UN | 20 | 17 | 104 | 6 x M5 | 6500 | 330 |
| 150 | 2 | 150/2B - 250 | 2.5 | 56 | 125 | 2 | 5/8" - 32 UN | 20.6 | 18 | 135.75 | 4 x M6 | 4000 | 525 |
| | 2 | 150/2BC - 250 | 2.5 | 56 | 125 | 2 | 5/8" - 32 UN | 20.6 | 18 | 135 | 4 x M6 | 4000 | 525 |
| | 3 | 150/3B - 250 | 2.5 | 56 | 125 | 2 | 5/8" - 32 UN | 20.6 | 18 | 135.75 | 6 x M6 | 4000 | 350 |
| | 3 | 150/3BC - 250 | 2.5 | 56 | 125 | 2 | 5/8" - 32 UN | 20.6 | 18 | 135.75 | 6 x M6 | 4000 | 350 |
| 200 | 3 | 200/3B - 250 | 2.5 | 81 | 167.6 | 8 | 5/8" - 32 UN | 20.6 | 6 | 183 | 6 x M10 | 3500 | 900 |
| | 3 | 200/3BC - 250 | 2.5 | 81 | 167.6 | 8 | 5/8" - 32 UN | 20.6 | 6 | 183 | 6 x M10 | 3500 | 900 |

Spannfutter Ø 115 mm für Backen mit Kreuzverschluss
Spannwiederholgenauigkeit Typ N 2.5 µm;
Typ EP 1.5 µm
Typ B ohne, Typ BC mit Kühlmittel-Zufuhr

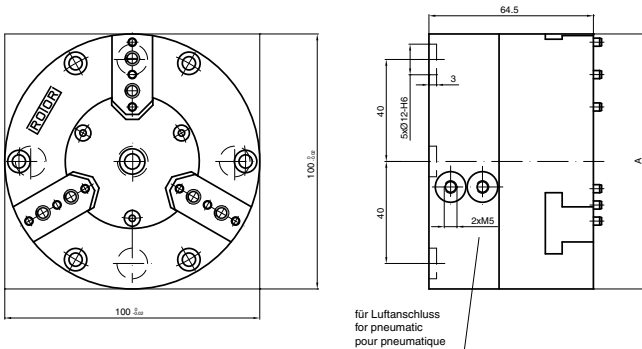
Ø 115 mm Chucks with tongue & groove
Repeatability type N 2.5 µm; type EP 1.5 µm
Type B without, Type BC with coolant passage

Ø 115 mm Mandrins à tenons croisés
Répétibilité type N 2.5 µm; type EP 1.5 µm
Type B sans, Type BC avec passage arrosage

Futter für stationären Einsatz

Stationary Chucks

Mandrins statiques



| Ø A mm | Backen jaws jeux | Best. Nr. Order No. no. de com. | Backenhub im Ø Stroke on diameter Course des mors au Ø mm | Spannkraft Gripping force force de serrage daN |
|-----------|------------------------|---------------------------------------|--|---|
| 100-h6 | 2 | M100/2 - 250 | 2.5 | 330 |
| | 3 | M100/3 - 250 | 2.5 | 220 |
| | 2 | 6M100/2 - 250 | 2.5 | 330 |
| | 3 | 6M100/3 - 250 | 2.5 | 220 |